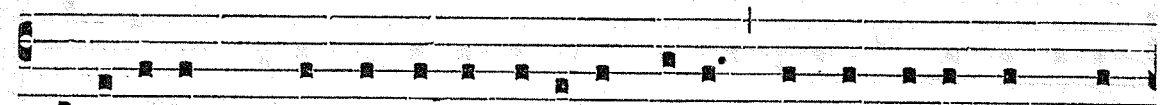



conticu-é-runt sénes fí-li-ae Sí-on : conspersérunt cíne-re cá-
 pi-ta sú-a, accíncti sunt ci-lí-ci-is, abjecérunt in térram
 cápi-ta sú-a vírgines Jerúsa-lem. CAPH.



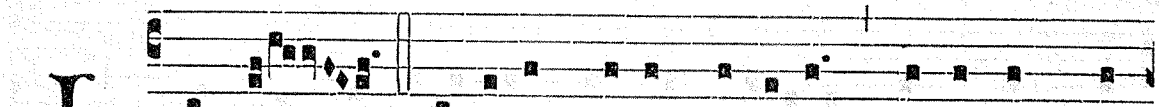
De-fecérunt prae lácrimis ócu-li mé-i, conturbáta sunt ví-
 sce-ra mé-a : ef-fúsum est in térra jécus mé-um super con-
 tri-ti-óne fí-li-ae pópu-li mé-i, cum de-fíce-ret párvulus et
 láctens in platé-is óppi-di. Jerúsa-lem, Jerúsa-



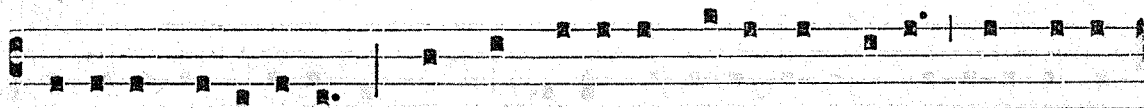
lem, convértere ad Dóminum Dé-um tú-um.

Lectio II.

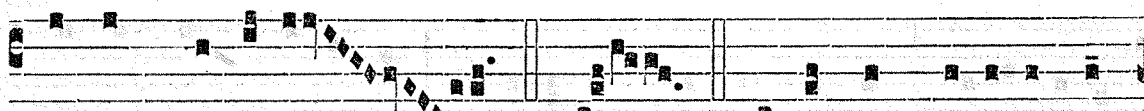
Ex Cod. Toletano.



L Amed. Mátribus sú-is dixérunt : Ubi est trí-
 ticum et vínum? cum de-fícerent qua-si vulnerá-ti in



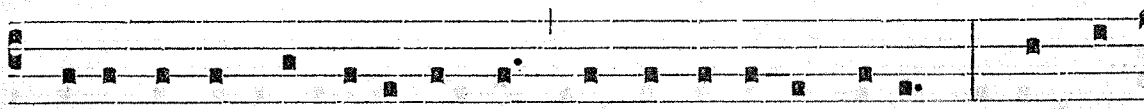
platé- is ci-vi-tátis : cum exhalárent ánimas sú-as in sínu



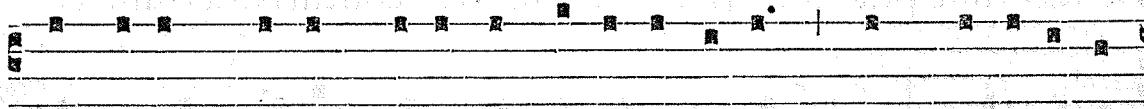
mátrum su-árum. MEM. Cú-i comparábo te?



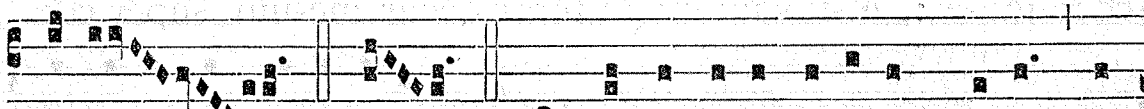
vel cú-i assimi-lábo te, fí-li-a Jerúsa-lem? Cú-i exae-



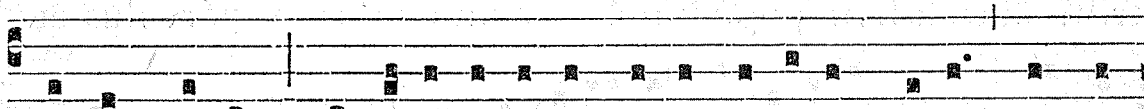
quábo te et consolábor te, vírgo fí-li-a Sí-on? Mágna



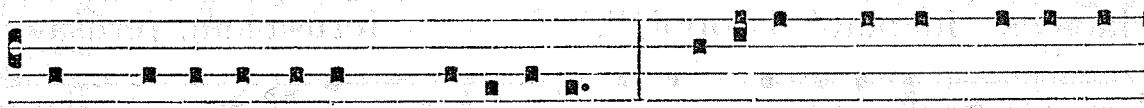
est enim vel-ut máre contrí-ti-o tú-a : quis medébi-tur



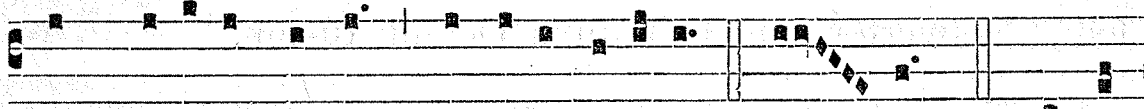
tú-i? NUN. Prophétae tú-i vidérunt tíbi fál-



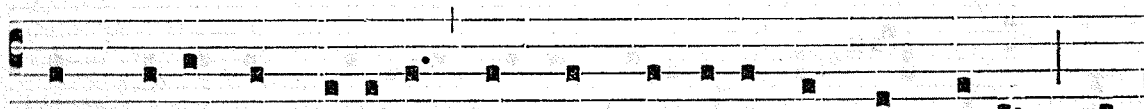
sa et stúlta, nec ape-ri-ébant in-iqui-tátem tú-am, ut te



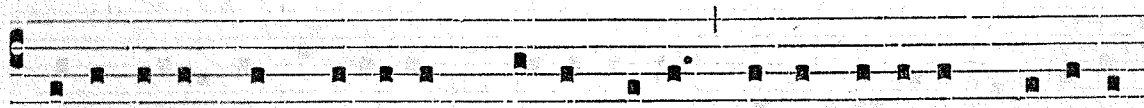
ad poeni-ténti-am provocárent : vidérunt autem tí-bi as-



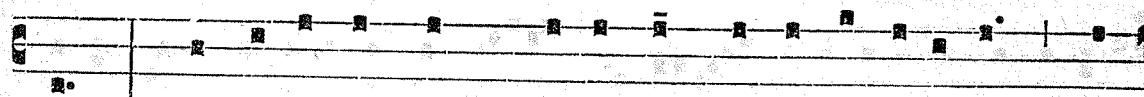
sumpti-ónes fálzas, et e-jecti-ónes. SA- MECH. Plausé-



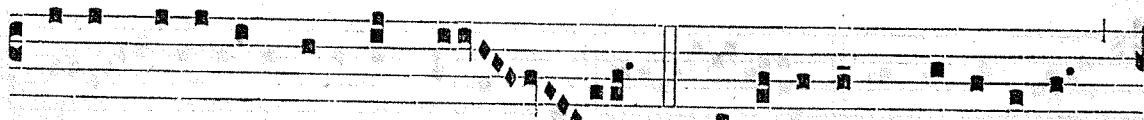
runt super te mánibus ómnes transe-úntes per ví-am : si-



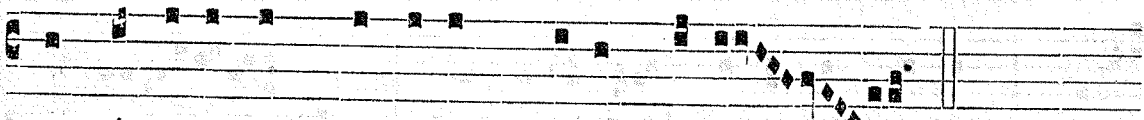
bi-lavérunt, et movérunt cáput sú-um super fí-li-am Jerúsa-



lem : Haécine est urbs, di-céntes, perfécti decó-ris, gáu-



di-um univérsae térrae? Jerúsa-lem, Jerúsa-lem,

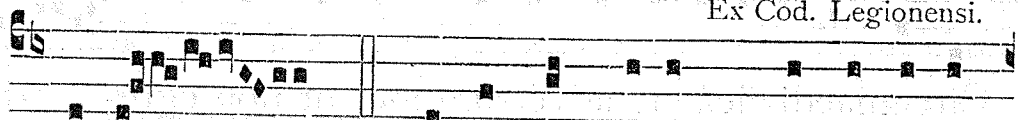


convérte-re ad Dóminum Dé-um tú-um.

Lectio III.

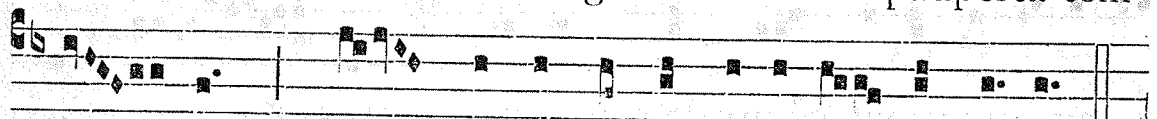
Ex Cod. Legionensi.

A

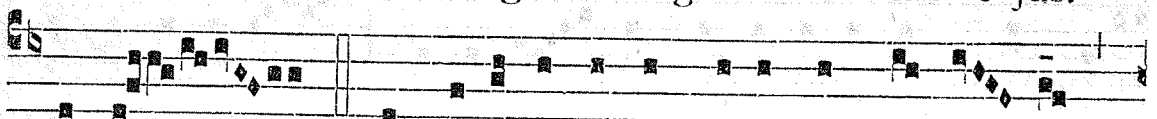


-LEPH.

Ego vir vídens paupertá-tem

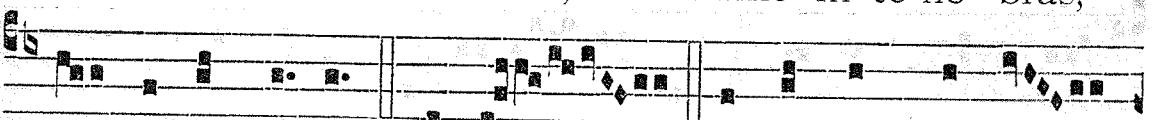


mé-am in vírga indigna-ti-ó-nis é-jus.

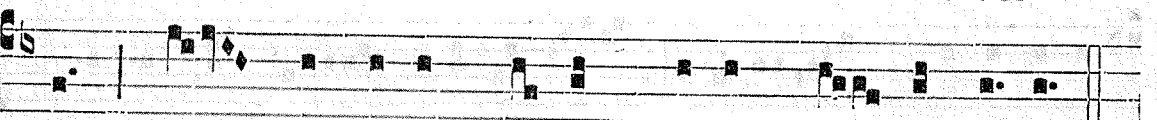


ALEPH.

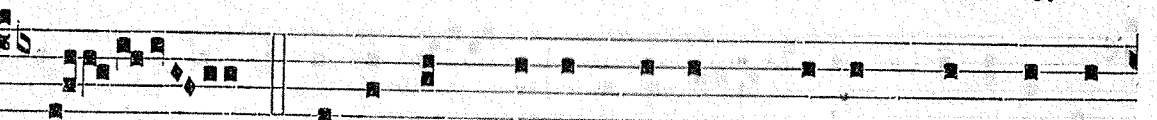
Me miná-vit, et addúxit in té-ne-bras,



et non in lú-cem. ALEPH. Tantum in me vér-

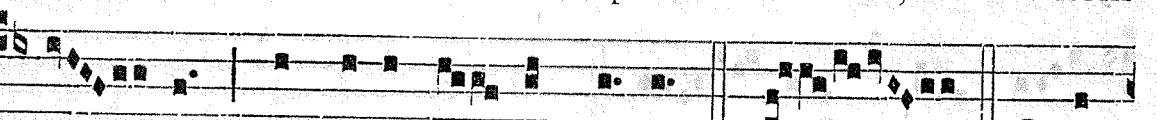


tit, et convértit má-num sú-am tó-ta dí-e.

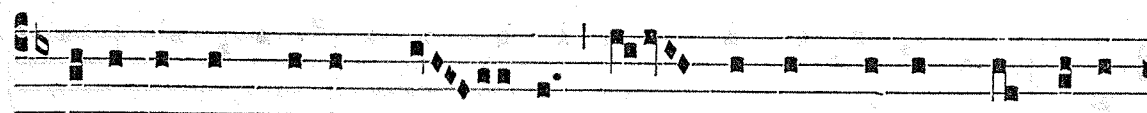


BETH.

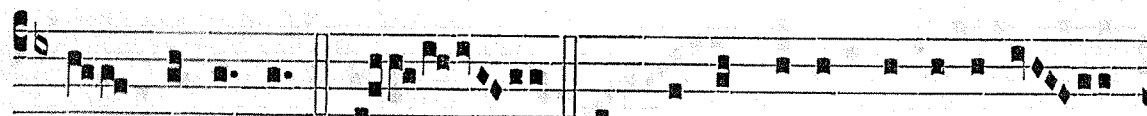
Ve-tústam fé-cit péllem mé-am, et cárnem



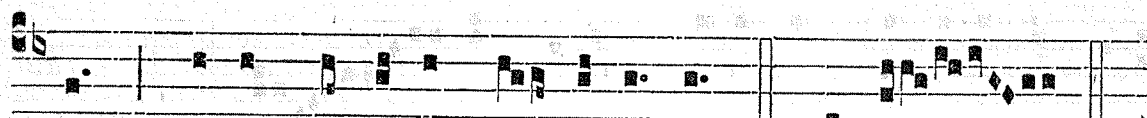
mé-am, contrívit ós-sa mé-a. BETH. Aedi-



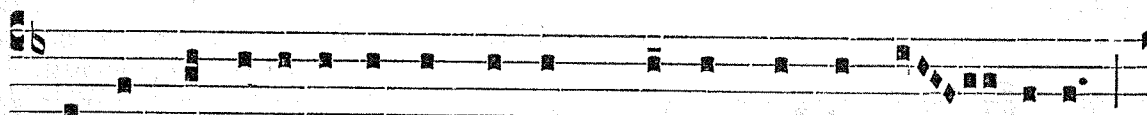
ficá-vit in gýro mé- o, et circúmde-dit me félle



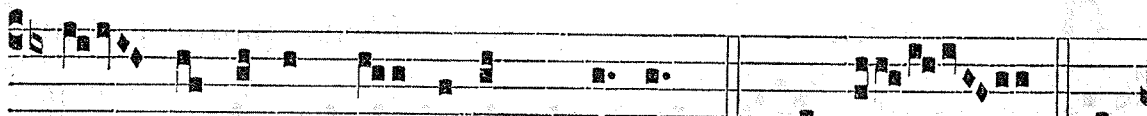
et labó-re. BETH. In tenebró-sis collocávit



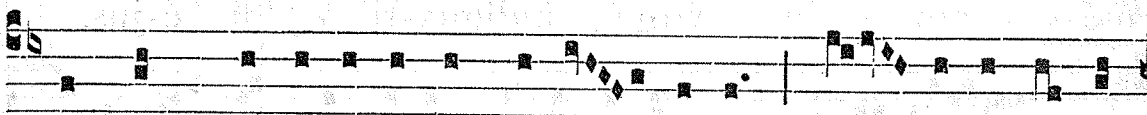
me, qua-si mórtu-os sempi-térnos. GHIMEL.



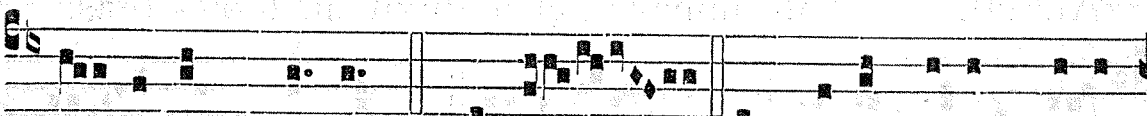
Circumaedi-ficá-vit advérsum me, ut non egré- di-ar :



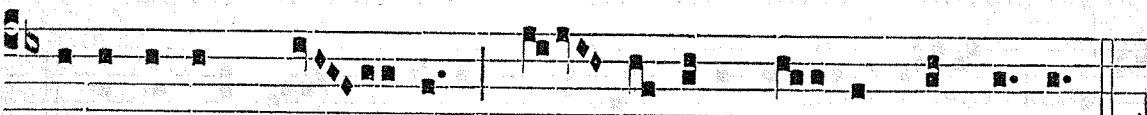
ag-gra-vá-vit cómpedem mé- um. GHIMEL. Sed,



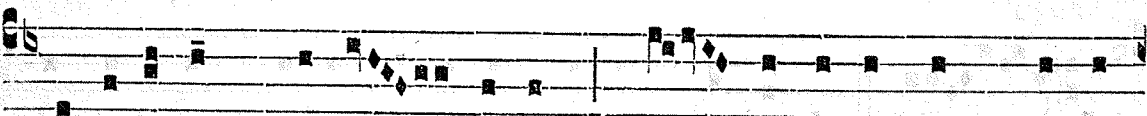
et cum clamáve-ro et rogá- ve-ro, ex-clú-sit o-ra-



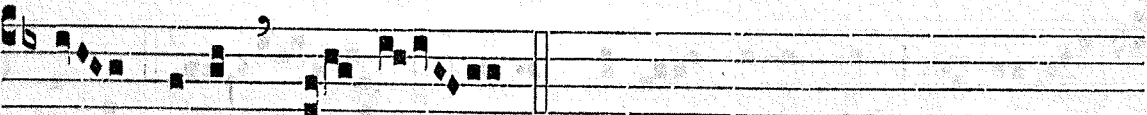
ti- ónem mé- am. GHIMEL. Conclú-sit ví- as mé- as



lapi-dibus quá- dris, sé- mi-tas mé- as subvér-tit.



Je-rúsa-lem, Je-rú- sa-lem, con- vért-e-re ad Dómi-



num Dé-um tú- um.

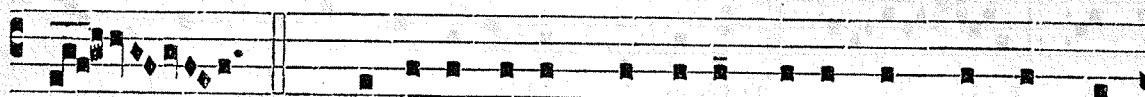
SABBATO SANCTO.

Lectio I.

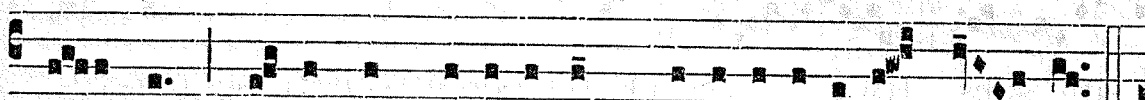
Ex Cod. Silensi.

D

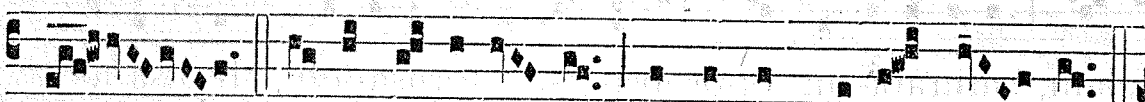
E lamenta-ti-óne Jerémi-ae prophé- tae.



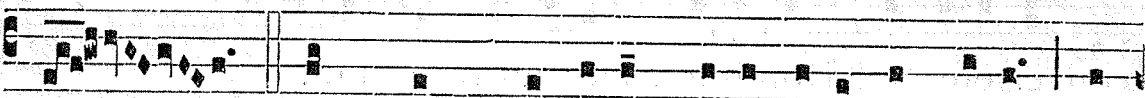
HETH. Mi-se-ricórdi-ae Dómini qui-a non súnus con-



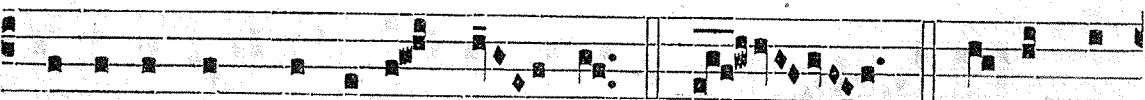
súmpti : qui- a non defecé-runt mi-sera-ti-ónes é- jus.



HETH. Nó-vi di-lúcu- lo, múlta est fí-des tú- a.



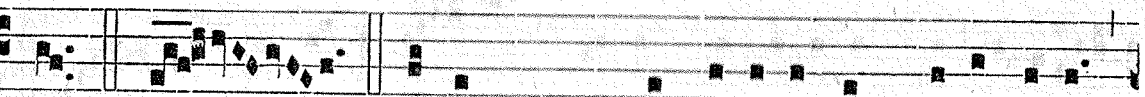
HETH. Pars mé-a Dóminus, díxit ánima mé-a : pro-



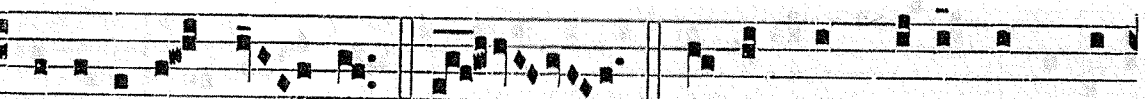
ptér-e- a exspectábo é- um. TETH. Bónus est



Dóminus sperántibus in é- um, ánimae quaerénti il-



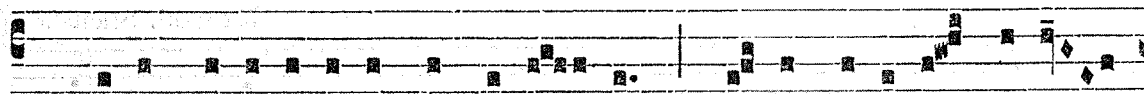
lum. TETH. Bónum est praesto-lári cum si-lénti- o



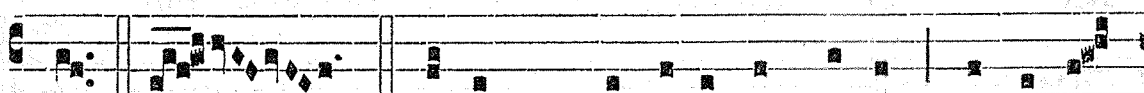
salu-tá-re Dé- i. TETH. Bónum est víro, cum por-



táve-rit jú- gum ab ado-lescé-nti- a sú- a. JOD.



Sedébit so-li-tá-ri- us, et tacé- bit : qui- a levá- vit super



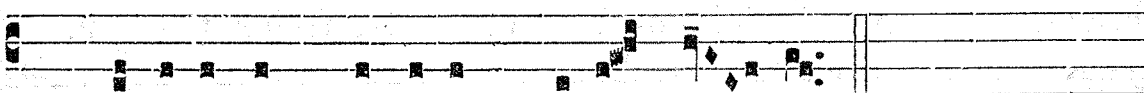
se. JOD. Pónet in púl-vere os sú- um, si forte



sit spes. JOD. Dá- bit percu- ti- énti se ma- xíl-



lam, saturá- bi- tur oppró- bri- is. Jerú- sa- lem, Jerú- sa- lem,



convértere ad Dó- mi- num Dé- um tú- um.

Lectio II.

Ex Cod. Legionensi.

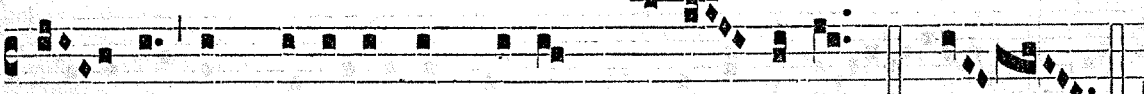
A



-LEPH. Quó- modo obscurá- tum est áu- rum, mu-



tátus est có- lor ó- ptimus, dispé- rsi sunt lápides sanctu- á-



ri- i in cá- pi- te ómni- um pla- te- á- rum? BETH.



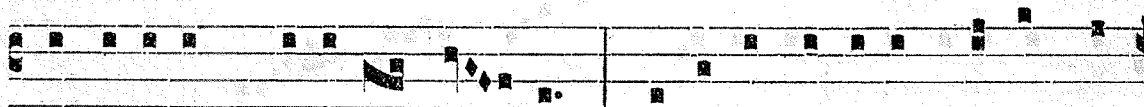
Fí- li- i Sí- on ín- cly- ti, et amí- cti áu- ro prí- mo : quó- mo-



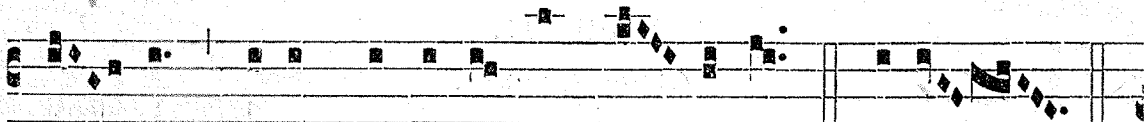
do repu-táta sunt in vása téste- a, ópus mánu-um fí-



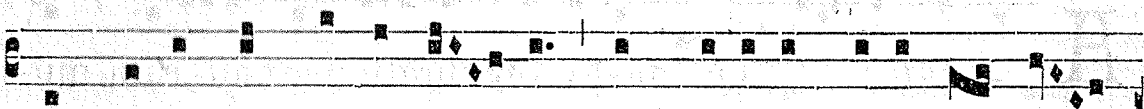
gu-li? GHIMEL. Sed et lámiae nudavérunt mámmam,



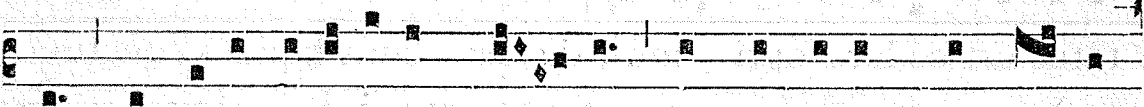
lactavérunt cátu-los sú- os : fí-li- a pópu-li mé- i cru-



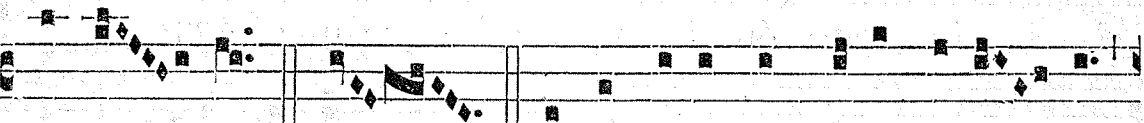
dé- lis quasi strúthi- o in de- sérto. DALETH.



Adhaésit língua lactén- tis ad palátum éjus in sí-



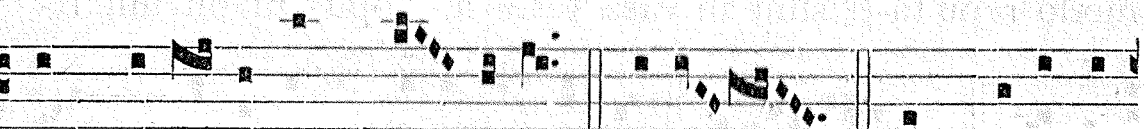
ti : párvu-li pe-ti-érunt pá- nem : et non érat qui fránge-



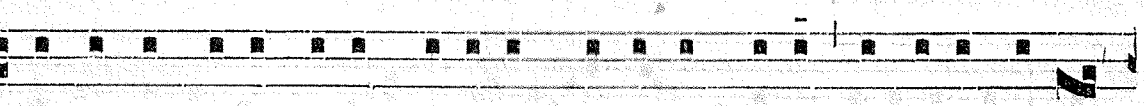
ret é- is. HE. Qui vescebántur voluptu- ó- se,




inter-i-érunt in ví- is : qui nutri-ebántur in cró- ce-is



amplexá- ti sunt stér- co- ra. VA-U. Et májor ef-



fécta est iníqui- tas fí-li- ae pópu-li mé- i peccáto Sodo-

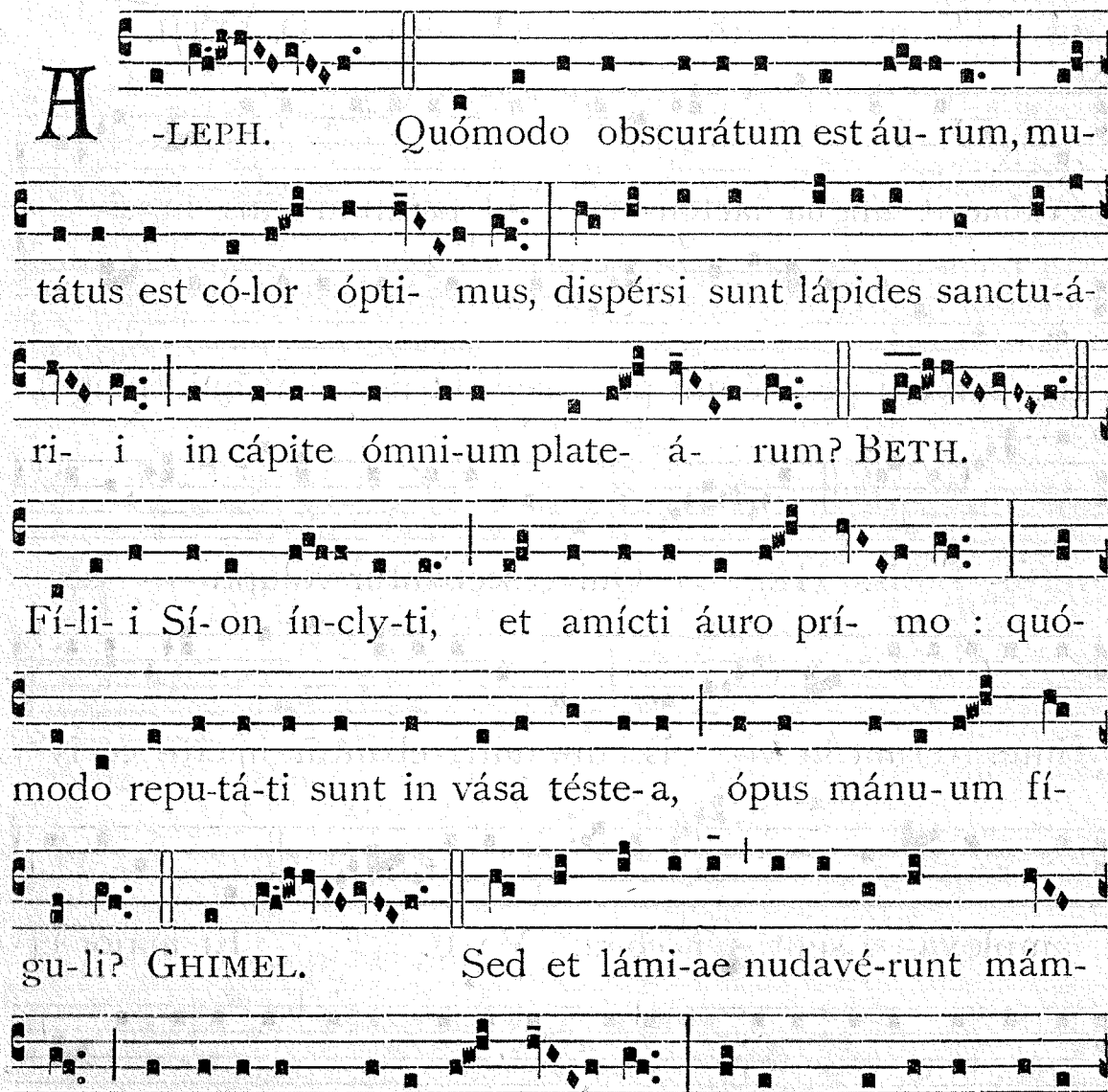


mó- rum, quae subvérsa est in momén- to, et non cepé-
runt in é- a má- nus. Jerú-salem, Jerú- sa-lem,
convértere ad Dómi-num Dé-um tú- um.

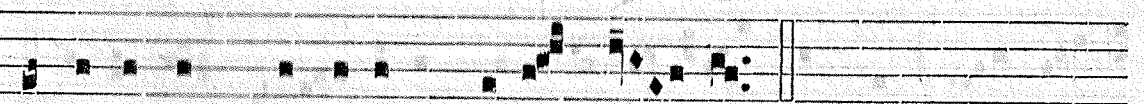
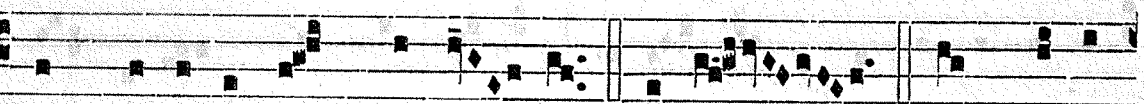
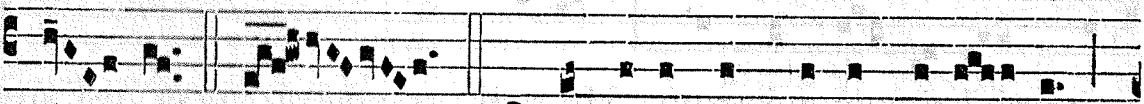
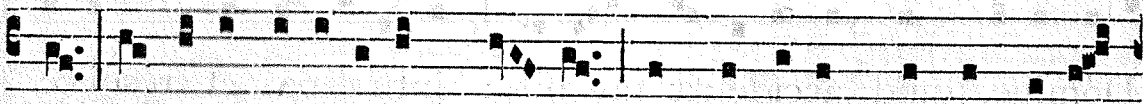
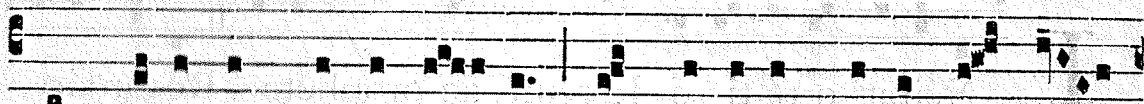
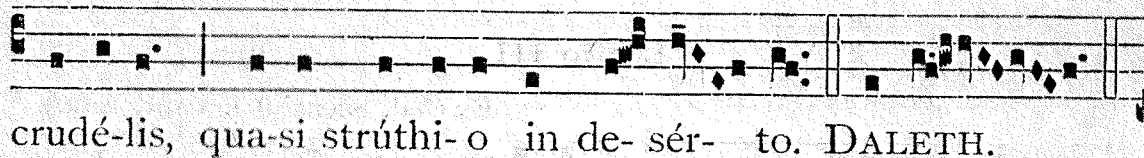
Lectio II.

(Alius Cantus).

Ex Cod. Silensi.



A -LEPH. Quómo- do obscurátum est áu- rum, mu-
tátus est có- lor ópti- mus, dispérsi sunt lápides sanctu-á-
ri- i in cápite ómni-um plate- á- rum? BETH.
Fí- li- i Sí- on ín- cly- ti, et amícti áuro prí- mo : quó-
modo repu- tá- ti sunt in vása téste- a, ópus mánu- um fí-
gu- li? GHIMEL. Sed et lámí- ae nudavé- runt má- m-
mam, lactavé- runt cátu- los sú- os : fí- li- a pópu- li mé- i



Lectio III.

Ex Cod. Silensi (Cf. Vatic. Edit.).

Incipit o-rá-ti-o Je-remí-ae prophétae. Recordáre,

Dómine, quid accíde-rit nó-bis : intu-é-re, et réspi-ce

oppró-bri-um nó-strum. He-rédi-tas nó-tra vérsa est ad

a-li-é-nos : dómus nó-strae ad extrá-ne-os. Pupílli

fácti súmus absque pá-tre, mátres nó-strae qua-si ví-

du-ae. Aquam nó-stram pecúni-a bí-bi-mus : lígna nó-

stra pré-ti-o compará-vimus. Cerví-cibus nó-stris mina-

bá-mur, lássis non dabá-tur ré-qui-es. Aegýpto dédimus

má-num, et Assý-ri-is, ut satura-rémur pá-ne.