

Full Score

Ostrowski, Gloria  
Dingess, Brass Interludes

Gloria  
in Honor of  
Saint Ralph Sherwin

Brass Interludes

# Sherwin Gloria Interludes

Dingess

Before the Gloria is intoned

Introduction

$\text{♩} = 120$

1st Trumpet in B $\flat$

2nd Trumpet in B $\flat$

Horn in F

Trombone

Tuba

Organ  
*In absence of brass*

$\text{♩} = 120$

Tpt. 1

Tpt. 2

Hn.

Tbn.

Tba.

Org.

After "for your great glory."

Interlude 1

♩=90

Musical score for Interlude 1, measures 1-4. Instruments: Tpt. 1, Tpt. 2, Hn., Tbn., Tba., Org. (Grand Staff). Time signature: 4/4. Tempo: ♩=90. The score shows various melodic lines and rests for each instrument.

After "at the right hand of the Father,  
have mercy on us." ♩=75

Interlude 2

♩=75

Musical score for Interlude 2, measures 1-4. Instruments: Tpt. 1, Tpt. 2, Hn., Tbn., Tba., Org. (Grand Staff). Time signature: 6/4. Tempo: ♩=75. The score shows melodic lines and rests for each instrument.

<sup>4</sup>With the congregation  
♩=120

Amen

Musical score for the piece "Amen". The score is written in 4/4 time with a tempo of 120 beats per minute. The key signature has two flats (B-flat and E-flat). The instruments are Tpt. 1, Tpt. 2, Hn., Tbn., Tba., and Org. The score consists of two measures. The first measure contains the main melodic line for all instruments. The second measure contains sustained notes for all instruments, with the Organ playing a complex chordal accompaniment in the lower register.

1st Trumpet in B $\flat$

# Sherwin Gloria Interludes

Dingess

Before the Gloria is intoned

Introduction

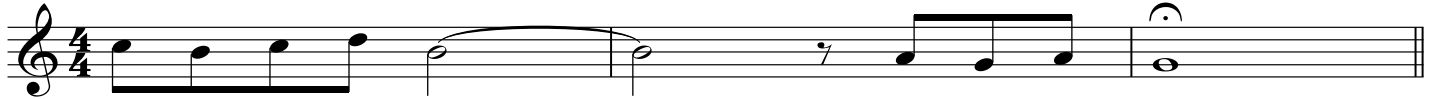
$\text{♩} = 120$



After "for your great glory."

Interlude 1

$\text{♩} = 90$



After "at the right hand of the Father,  
have mercy on us."

Interlude 2

$\text{♩} = 75$



With the congregation

Amen

$\text{♩} = 120$



2nd Trumpet in B $\flat$

# Sherwin Gloria Interludes

Dingess

Before the Gloria is intoned

Introduction

$\text{♩} = 120$

Musical notation for the Introduction section, starting with a 3/4 time signature and transitioning to 6/4. The melody consists of quarter and eighth notes, ending with a half note.

After "for your great glory."

Interlude 1

$\text{♩} = 90$

Musical notation for Interlude 1, in 4/4 time. The melody consists of quarter and eighth notes, concluding with a half note.

After "at the right hand of the Father,  
have mercy on us."

Interlude 2

$\text{♩} = 75$

Musical notation for Interlude 2, starting with a 7-measure rest, followed by a 6/4 time signature and a double bar line with a '2' above it, indicating a two-measure rest.

With the congregation

Amen

$\text{♩} = 120$

Musical notation for the Amen section, in 4/4 time. The melody consists of quarter notes, ending with a half note.

Horn in F

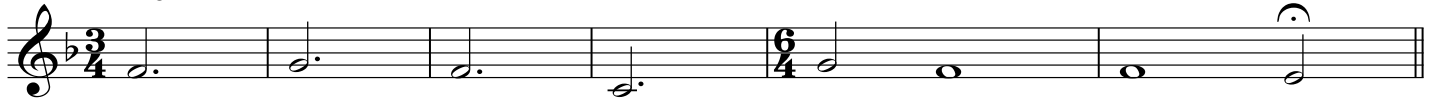
# Sherwin Gloria Interludes

Dingess

Before the Gloria is intoned

Introduction

♩=120



After "for your great glory."

Interlude 1

♩=90



After "at the right hand of the Father,  
have mercy on us." ♩=75

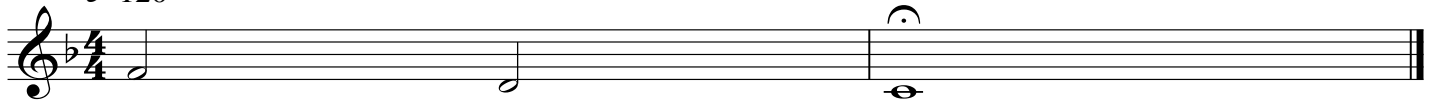
Interlude 2



With the congregation

Amen

♩=120



Trombone

# Sherwin Gloria Interludes

Dingess

Before the Gloria is intoned

$\text{♩} = 120$

Introduction

Musical notation for the Introduction section. It consists of a single staff in bass clef with a key signature of two flats (B-flat and E-flat). The piece begins in 3/4 time and changes to 6/4 time after four measures. The melody is composed of half notes and whole notes, ending with a fermata over a whole note.

After "for your great glory."

$\text{♩} = 90$

Interlude 1

Musical notation for Interlude 1. It consists of a single staff in bass clef with a key signature of two flats. The piece is in 4/4 time and features a melody of half notes, ending with a fermata over a whole note.

After "at the right hand of the Father,  
have mercy on us."  $\text{♩} = 75$

Interlude 2

Musical notation for Interlude 2. It consists of a single staff in bass clef with a key signature of two flats. The piece begins with a whole rest, then changes to 6/4 time. The melody consists of half notes and whole notes, ending with a fermata over a whole note.

With the congregation

$\text{♩} = 120$

Amen

Musical notation for the Amen section. It consists of a single staff in bass clef with a key signature of two flats. The piece is in 4/4 time and features a melody of quarter notes, ending with a fermata over a whole note.



Tuba

# Sherwin Gloria Interludes

Dingess

Before the Gloria is intoned

$\text{♩} = 120$

Introduction

After "for your great glory."

$\text{♩} = 90$

Interlude 1

After "at the right hand of the Father,  
have mercy on us."  $\text{♩} = 75$

Interlude 2

**2**

With the congregation

$\text{♩} = 120$

Amen

# Organ Reduction

*In absence of brass*

## Sherwin Gloria Interludes

Dingess

Before the Gloria is intoned

Introduction

$\text{♩} = 120$

After "for your great glory."

Interlude 1

$\text{♩} = 90$

After "at the right hand of the Father,  
have mercy on us."

Interlude 2

$\text{♩} = 75$

With the congregation

Amen

$\text{♩} = 120$