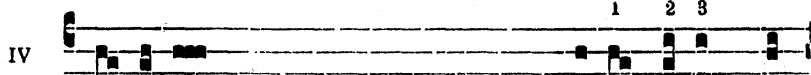


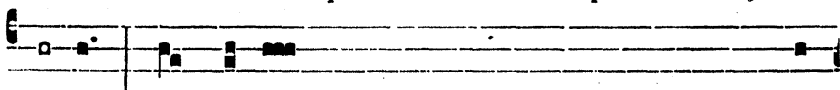
## DOMINICA II POST EPIPHANIAM

## AD INTROITUM

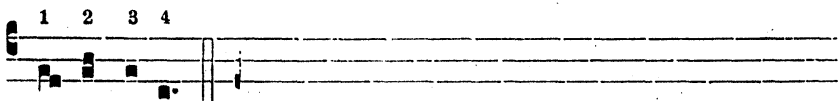
Ps. 65, 3, 5



Di-ci-te Deo : | quam terribilia sunt ópe-ra<sup>1</sup> tu<sup>2</sup>-a<sup>3</sup>, Dó-



mi-ne! \* in mul-titú-dine virtútis tuæ | mentiéntur tibi ini-

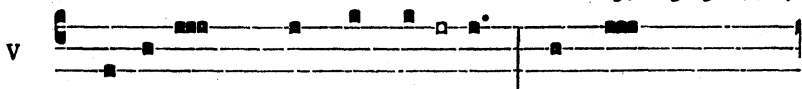


mí<sup>1</sup>-ci<sup>2</sup> tu<sup>3</sup>-i<sup>4</sup>. *Ant.*

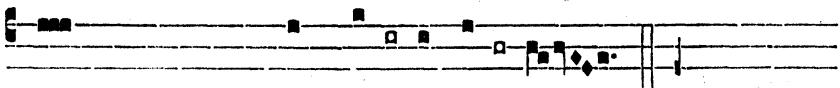
*Ve-ní-te* et vidéte ó-pe<sup>1</sup>-ra<sup>3</sup> De-i : \* *ter-ri*-bilis in consiliis super fili-os<sup>1</sup> hó<sup>2</sup>-mí<sup>3</sup>-num<sup>4</sup>.

## AD COMMUNIONEM

Ps. 65, 1-3, 5-6, 8-9



1. *Iu-bi-lá-te* Deo, om-nis<sup>1</sup> ter- ra, \* *psal-mum* dícite nó-



mini eius, | date glóriam lau- di e- ius. *Ant.*

2. *Di-ci-te* Deo : | quam terribilia sunt ópera tu-a<sup>1</sup>, Dó-mine! \* in multítudine virtútis tuæ | mentiéntur tibi ini-mí-ci tú-i.

3. *Ve-ní-te* et vidéte ópe-ra<sup>1</sup> De-i : \* *ter-ri*-bilis in consiliis super ffi-lios hó-minum.

4. *Qui con-vértit* mare in áridam, | in flúmine pertransí-bunt<sup>1</sup> pe-de : \* *i-bi lætábi-mur* in ip-so.

5. *Be-ne-dícite*, gentes, De-um<sup>1</sup> no-strum : \* *et audítam fácite* vocem lau-dis e-ius.

6. *Qui pó-suit* ánimam meam ad<sup>1</sup> ví-tam : \* *et non dedit* in commotió-nem pe-des me-os.

*Aa libitum, Psalmus 33, v, vel VI, 16.*