

The Morning Star Is On The Rise

Office Hymn for the Feast of St. Anne


Kathleen Pluth, *tr.*

Charles H. Giffen


** Initial "H. III T" was created as the Full Staff Name, using 36pt for "T" and adjust spacing as needed.*

** Raw entry of notes in 1/4 time.*


H. III
T



He morn-ing star is on the rise and soon the dawn will fill




the skies, fore-tell - ing of the com ing Sunwhoselight will shine



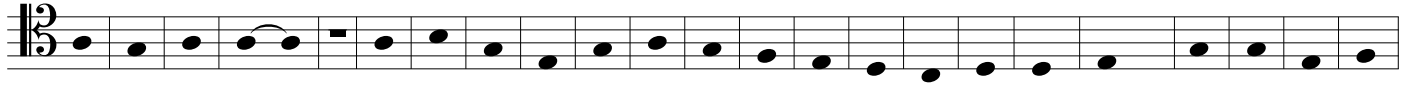
on ev - ery - one.

** Amalgamate bars with tied quarters to 2/4, using Time Signature tool with "Rebar music" selected.*


Note that there will be blank bars created after amalgamation.



2 The Sun of Jus - tice, Christ, the Light, and Ma - ry, gra - ce's dawn-




- ing bright, and An - na, red - den-ing the sky, have caused the Law

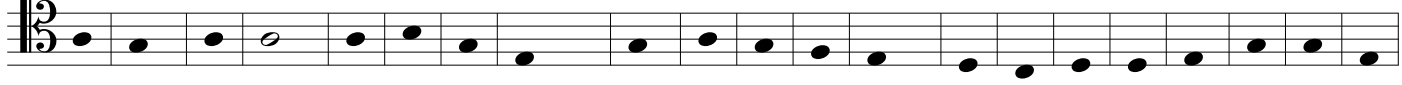


of night to fly.

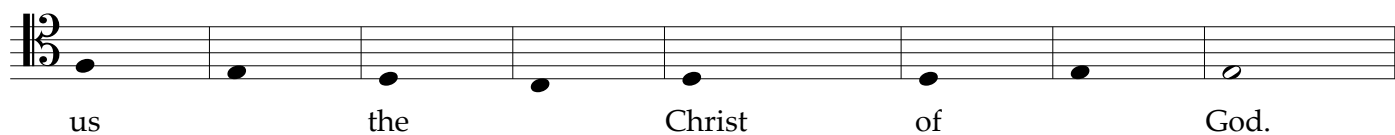
** Change tied quarters to half notes, delete blank bars.*



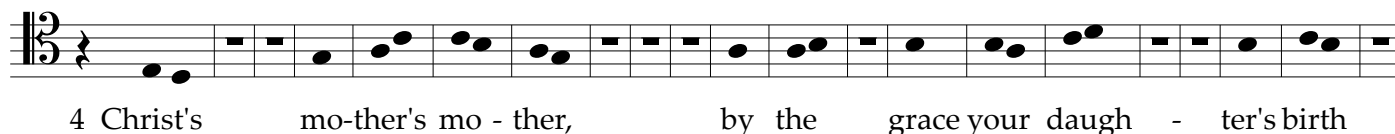
3 O mo-ther An - na, fruit-ful root, from you came your sal - va-



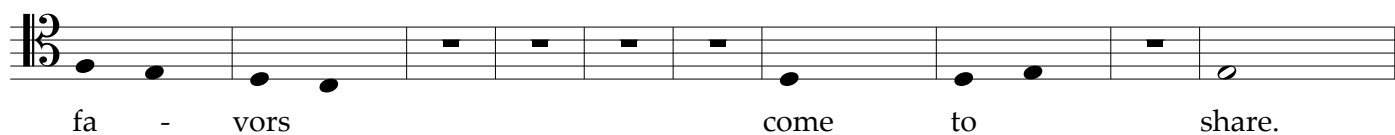
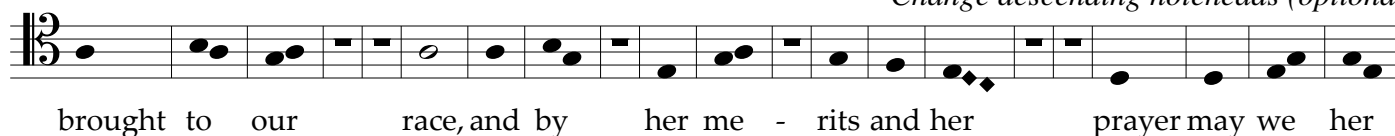
- tion's shoot, for you brought forth the flo-w'ring rod that bore for



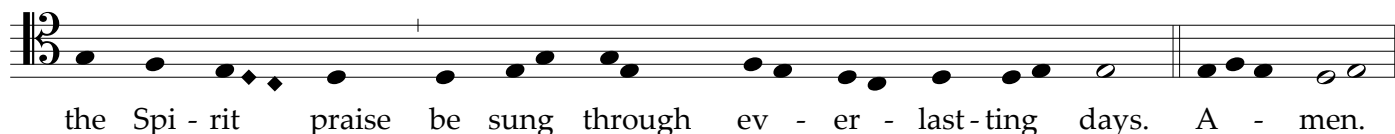
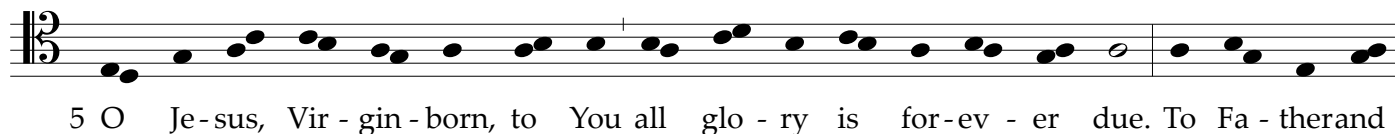
** Amalgamate multiple note syllables, using Time Signature tool with "Rebar music" selected.*



** Change descending noteheads (optional)*



** Delete blank measures. Change barlines to invisible, then add back barlines needed.
Hide rests for Stanza numbers.*



** When finished, use Measure tool to insert "Begin a new system" for formatting, as needed.
Do any other tweaks as necessary (eg. use Note Mover tool to move noteheads).*

Page Layout:

Resize Systems: Staff height 19.5pt.

Document Options:

Fonts: Lyric font: Palatino Linotype 14pt plain.

Lyrics: Syllable positioning: with word extensions: Center Left; 1st in lyric: Center, Left; at start of system: Center, Center; others: Center, Center.

Music Spacing: Minimum measure width: 0; Minimum distance between items: 0 (or 0.00347).

Spacing Widths... : Reference width: 0.00347.

Notes and Rests: Spacing before music: 0.11111; Spacing after music: 0.11111 (these values can be as small as 0.0625 or even 0.03125).