

2.

**A** Lle-lú-ia. \* *ij.*      *Y.* Tu es Pé-

trus,      et super hanc pé-      tram aedi-fi-

cá-      bo      Ecclé-si-am \* mé-      am.

Start pitch (DO) of E flat – FA (dominant) = A flat. Range of C to C. Much of piece hangs out between E flat and A Flat.

7.

**A** Lle-      lú-      ia. \* *ij.*

*Y.* Cándor      est lú-      cis aetér-      nae, spécu-lum

sine má-      cu-la,      et

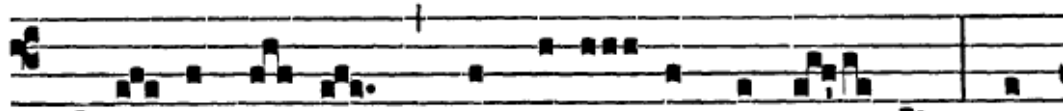
imá-      go      boni-tá-      tis \* illí-      us.

Start pitch (FA) of C - RE (dominant) = B flat. Range of (low) B flat to D. Much of the piece hangs in G to C range.

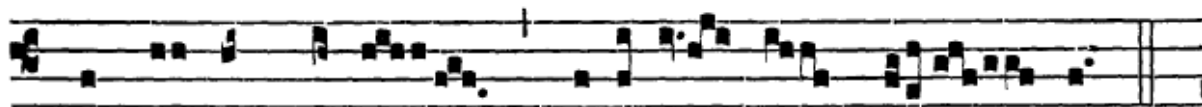
Intr.

2.

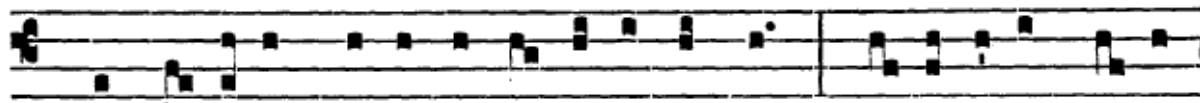
C



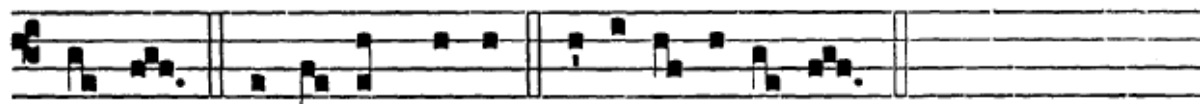
Ibá- vit é- os \* ex ádi- pe frumén- ti : et



de pé-tra, melle saturá- vit é- os.



*Ps.* Exsultáte Dé- o adju-tó-ri nóstro : \* ju-bi-lá-te Dé- o



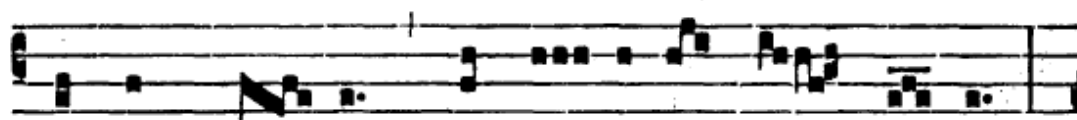
Já-cob. Gló-ri- a Pátri. E u o u a e.

Start pitch (LA) of C# – FA (dominant) = A. Range of C# to C#. Much of piece hangs out between E and A.

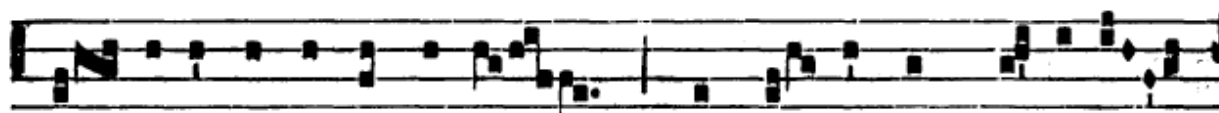
Intr.

7.

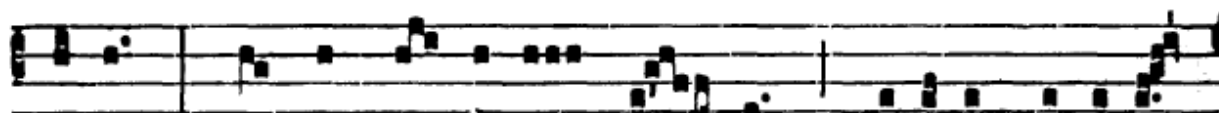
S



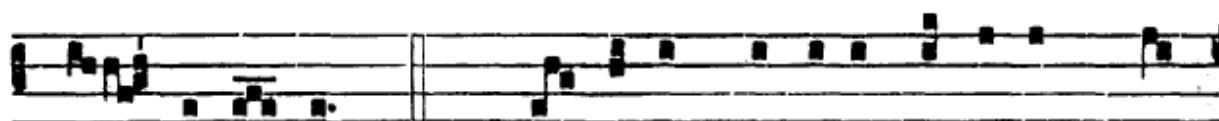
Ignum má-gnum \* appá- ru- it in caé- lo :



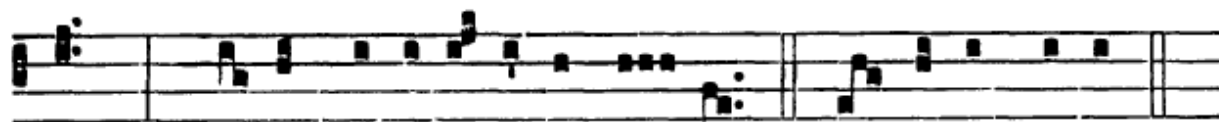
mú- li- er amícta só- le, et lú- na sub pé- dibus



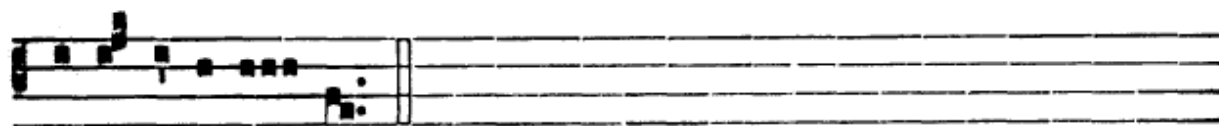
é- jus, et in cá- pi- te é- jus coróna stellárum



du- óde- cim. *Ps.* Can- tá- te Dómino cánti- cum nó-



vum : \* qui- a mi- rabí- li- a fé- cit. Gló- ri- a Pátri.



E u o u a e.

Start pitch (SOL) of D - RE (dominant) = A. Range of C to C. Much of the piece hangs in F# to B range.