

# THE HOLY FAMILY

**Entrance** *Deus in loco sancto suo*

RM 2011, ♪. GM Mode VII

God is in his holy place, God who unites those who dwell in his house;  
he him - self gives might and strength to his peo - ple. ♪. Let God  
arise, and let his ene - mies be scattered; and let those who hate him flee be -  
fore his face. Glo - ry be... Ho - ly Spir - it. As it was... and, ev -  
er shall be, world with - out end. A - men. God is in his holy place...

**Gradual** *Unam petii*

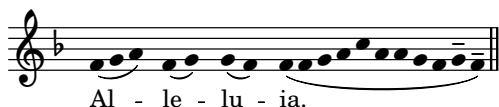
GM Mode V

One thing have I asked of the Lord, this will I seek af - ter. that  
I may dwell in the house of the Lord. ♪. To gaze in delight upon the  
Lord's beau - ty and to be sheltered in his ho - ly tem - ple.

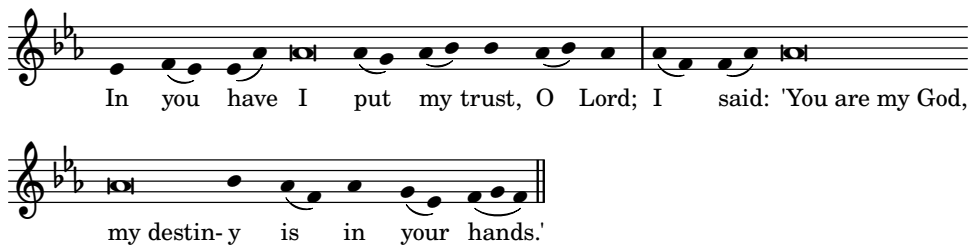
**Alleluia** *Gaudete iusti*

RM 1965 Mode VI

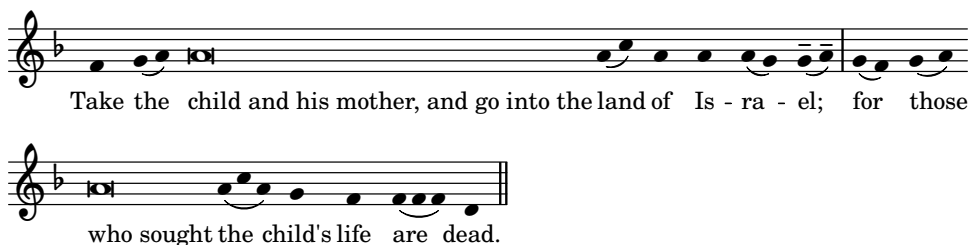
Al - le - lu - ia. Al - le - lu - ia.  
♪. Ex - ult, you just, in the Lord; praise from the up - right is fit - ting.


**Offertory** *In te speravi*

GM Mode VI


**Communion, Year A** *Tolle puerum*

GM Mode I


**Communion, Years B and C** *Fili, quid fecisti*

GM Mode I

