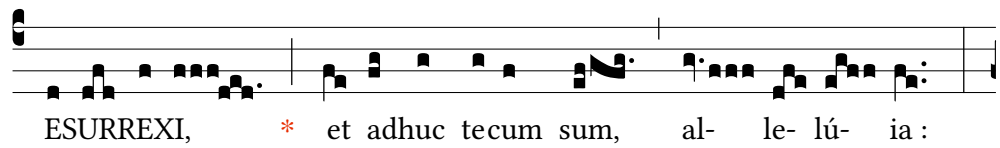


INTROIT.

IV

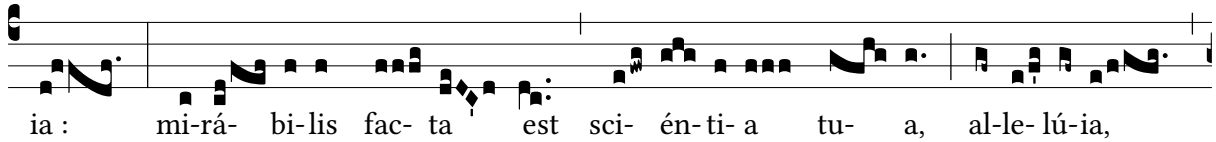
R



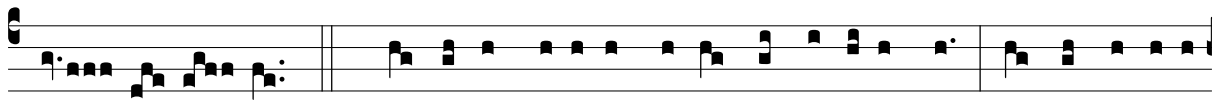
ESURREXI, * et adhuc tecum sum, al- le- lú- ia :



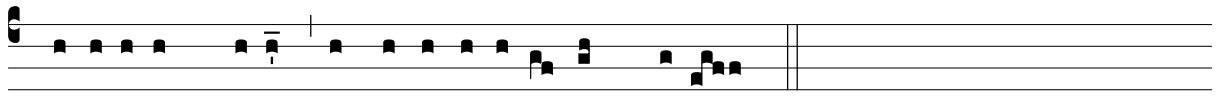
po- su- ís- ti su- per me ma- num tu- am, al- le- lú-



ia : mi- rá- bi- lis fac- ta est sci- én- ti- a tu- a, al- le- lú- ia,



al- le- lú- ia. *Ps :* Dó- mi- ne probásti me, et cogno- vísti me : tu cogno- vísti

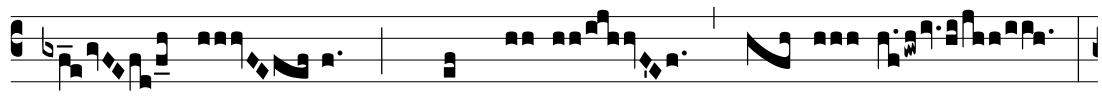


sessi- ónem me- am, et re- surrecti- ó- nem me- am.

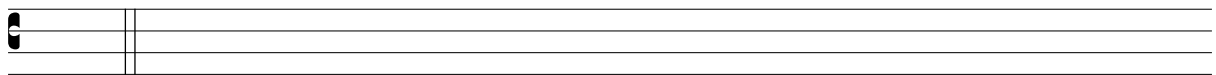
GRADUAL.

II

H



ÆC di- es, * quam fe- cit Dó- mi- nus :



Etc ...