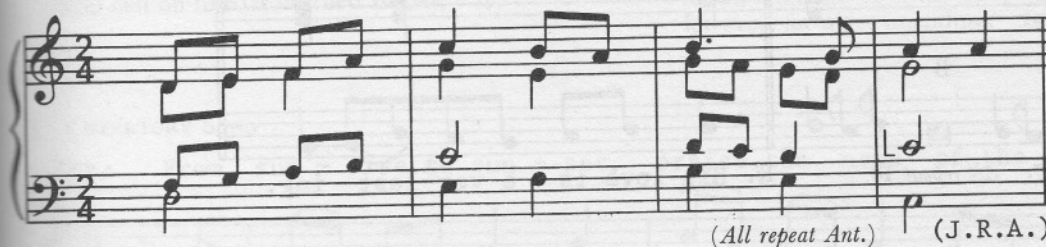
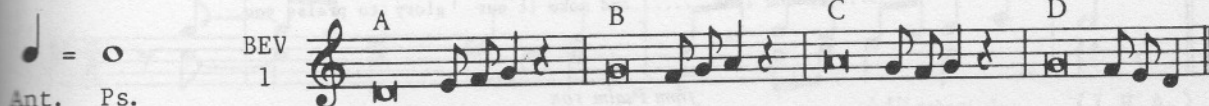


41 ENTRANCE SONG

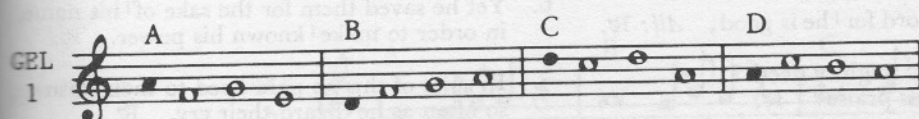
Ant: Bles-sèd be the name of the Lord for e-ver.



(All repeat Ant.) (J.R.A.)



Ant. Ps.



GEL
1



MUR
1

(twice)

Psalm 112

1. Práise, O sérvants^l of the Lórd,
práise the náme^l of the Lórd!
May the náme of the^l Lórd be bléssed
both nów and for^l évermóre! Ant.
2. From the rising of the sún^l to its sètting
práised be the náme^l of the Lórd!
Hígh above all nátions^l is the Lórd,
abóve the héa^lvens his glóry. Ant.
3. Whó is like the^l Lórd, our Gód,
who has risen on hígh^l to his thróne
yet stóops from the héights^l to look dówn,
to look dówn upon héa^lven and éarth? Ant.
4. From the dúst he lífts^l up the lówly,
from the dúngheap he ráis^les the póor
to sèt him in the cómpa^lny of prínces,
yés, with the prínces^l of his péople.
[Gel. & Bev: repeat C & D. Mur: repeat]
To the childless wífe he^l gíves a hóme
and gláddens her^l héart with children. Ant.

Dox. Give práise to the Fá^lther Almíghty,
to his Són, Jesus^l Christ the Lórd,
to the Spírit who dwélls^l in our héarts,
both nów and for^l éver. Amén. Ant.

The chants between the readings may be done as follows:

EITHER at least five verses of the RESPONSORIAL PSALM,
followed by the Alleluia and one or both of the
verses marked * from the ALLELUIA PSALM.

OR at least five verses of the ALLELUIA PSALM.