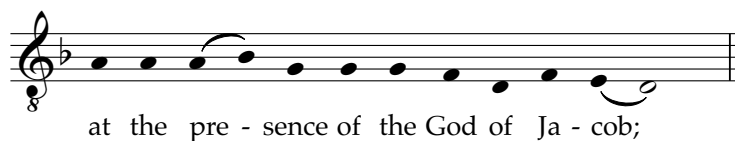
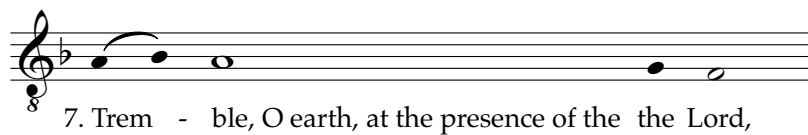
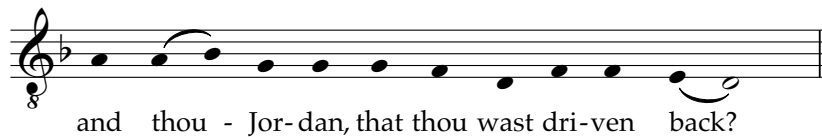
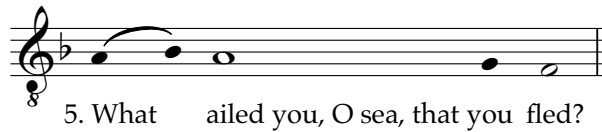
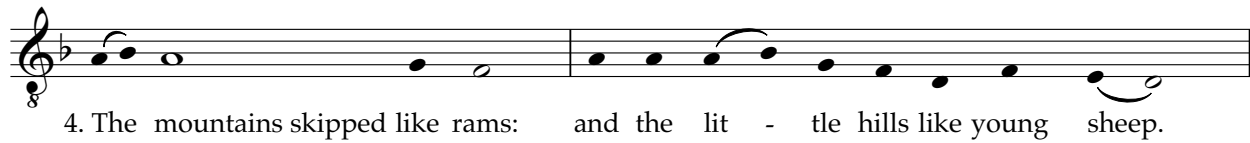
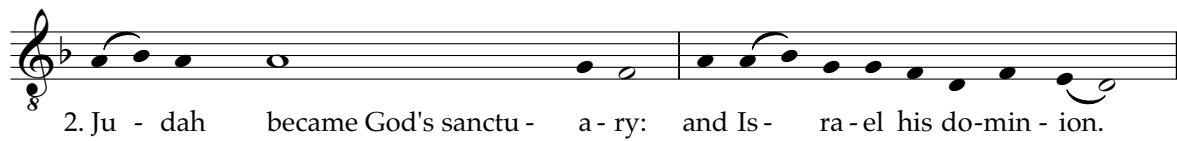
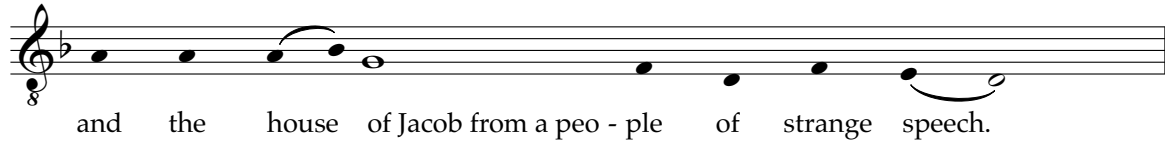
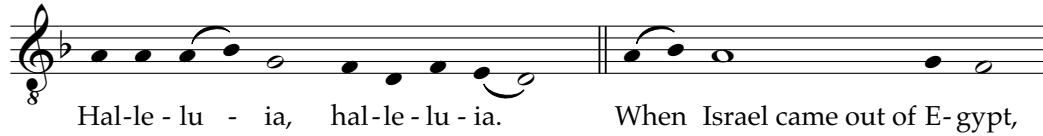


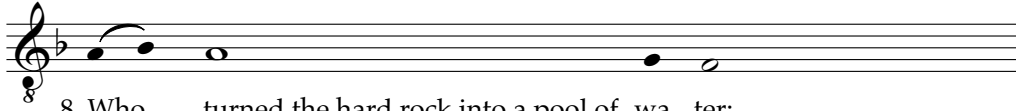
# Psalm 114

## In exitu Israel

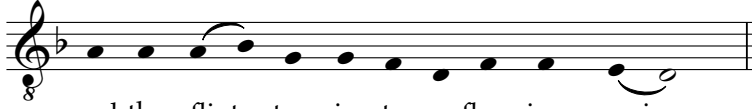
Book of Common Prayer, 1979

Gregorian chant, tone tp





8. Who - turned the hard rock into a pool of wa - ter:



and the flint - stone in - to a flow - ing spring.



Glo - ry to the Father, and to the Son: and to the Ho - ly Ghost;



As it was in the beginning, is now, and ever shall be: World with - out end. A - men.



Hal - le - lu - ia, hal - le - lu - ia.