

Flexa vocem quiescere sinit, sine tamen cantus intermissione.

Mediatio

Mediatio est clausula melodica quæ in primæ distinctionis fine invenitur et cantum ita intermittit ut toti chori interspirationem permittat.

Pro canticis Magnificat et Benedictus, in singulis tonis, potest ad libitum usurpari in sollemnitatibus mediatio sollemnis, magis ornata, quæ notatur infra, post tonos psalmorum.

Terminationes

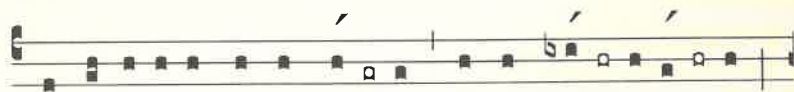
In plerisque tonis habentur variæ terminationes, quæ respective respondent variis incisionibus melodicis quibus antiphonæ inchoantur, ita ut ex fine versiculi facilius evadat transitus ad antiphonam, quando resumitur debet.

In eodem tono unaquæque terminatio designatur per litteram ultimæ notæ suæ respondentem et cum ipso tono in capite antiphonæ inscriptam. Id est : a pro la, b pro si, c pro ut, d pro re, e pro mi, f pro fa, g pro sol. Si plures terminationes eiusdem toni terminantur in eadem nota, distinguuntur per numerum litteræ adiunctum : v. g. in I tono : d, d2, d3.

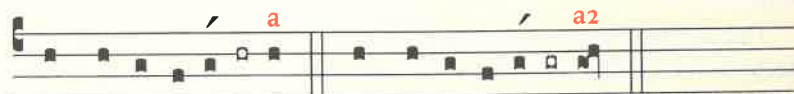
*Insuper conveniens terminatio semper in fine antiphonæ notatur sub litteris : **E u o u a e** (= sæculorum. Amen).*

TONI PSALMORUM

TONUS I



Sic incí-pitur, et sic flécti-tur, † et sic me- di- á- tur; *



Atque sic fi-ní- tur. Atque sic fi-ní- tur.



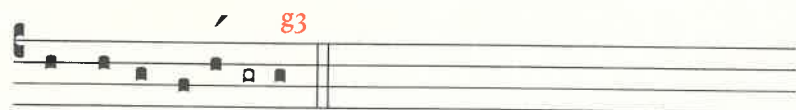
Atque sic fi- ní- tur. Atque sic fi-ní- tur.



Atque sic fi-ní- tur. Atque sic fi-ní- tur.



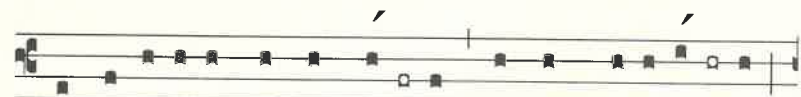
Atque sic fi-ní- tur. Atque sic fi-ní- tur.



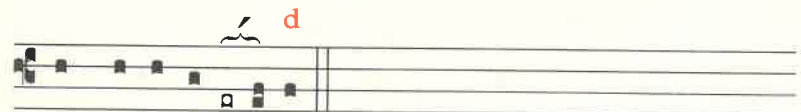
Atque sic fi-ní- tur.

Mediatio duplici accentu melodico constat; omnes vero terminationes unico accentu cum duabus syllabis præparationis.

TONUS II



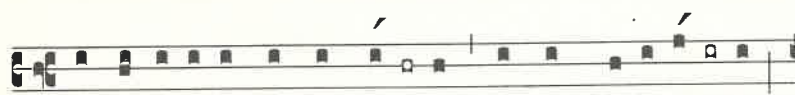
Sic incí-pitur, et sic flécti-tur, † et sic me-di- á- tur; *



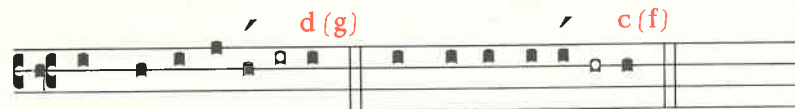
Atque sic fi- ní-tur.

Mediatio et terminatio unico accentu constant, terminatio vero cum una syllaba præparationis.

TONUS II*



Sic incí-pi-tur, et sic flécti-tur, † et sic me-di-á-tur; *



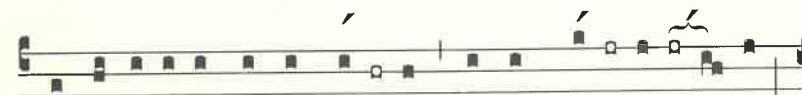
Atque sic fi-ní-tur. Atque sic fi-ní-tur.



Atque sic fi-ní-tur.

Mediatio unico accentu constat cum duabus syllabis præparationis ; terminationes vero unico accentu cum tribus syllabis præparationis, excepto terminatio c (vel f), in qua transitus fit directe a tenore ad accentum, absque syllaba præparationis.

TONUS III



Sic incí-pi-tur, et sic flécti-tur, † et sic me-di-á-tur; *



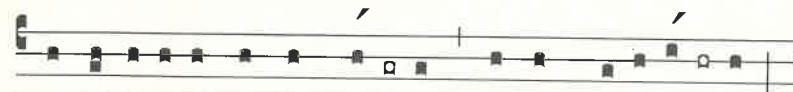
Atque sic fi-ní-tur. Atque sic fi-ní-tur.



Atque sic fi-ní-tur. Atque sic fi-ní-tur.

Omnes clausulæ duplici accentu constant.

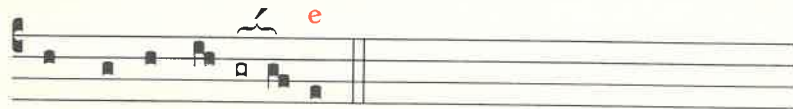
TONUS IV



Sic incí-pi-tur, et sic flécti-tur, † et sic me-di-á-tur; *



Atque sic fi-ní-tur. Atque sic fi-ní-tur.



Atque sic fi-ní-tur.

Mediatio unico accentu constat cum duabus syllabis præparationis ; terminationes vero unico accentu cum tribus syllabis præparationis, excepta terminatione g, in qua transitus fit directe a tenore ad accentum, absque syllaba præparationis.

Tonus psalmodicus, qui olim vocabatur « Quartus modus alteratus » vel « IVA », nunc cantatur ut tonus II.*

TONUS IV*



Sic incí-pi-tur, et sic flécti-tur, † et sic me-di-á-tur; *



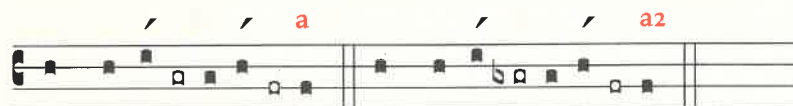
Atque sic fi-ní-tur.

Mediatio unico accentu constat cum duabus syllabis præparationis ; terminatio autem duplici accentu.

TONUS V



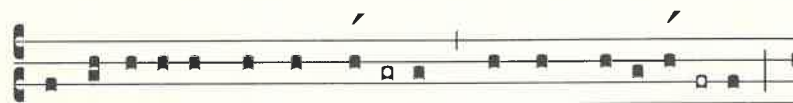
Sic incí-pi-tur, et sic flécti-tur, † et sic me-di-á-tur; *



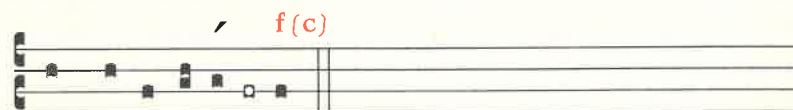
Atque sic fi-ní-tur. Atque sic fi-ní-tur.

*Mediatio unico accentu constat; terminatio vero duplici accentu.
Pro necessitate, terminatio a substitui potest terminationi a2.*

TONUS VI



Sic incí-pi-tur, et sic flécti-tur, † et sic me-di-á-tur; *



Atque sic fi-ní-tur.

*Mediatio unico accentu constat cum una syllaba præparationis;
terminatio vero cum duabus syllabis præparationis.*

TONUS VII



Sic incí-pi-tur, et sic flécti-tur, † et sic me-di-á-tur; *



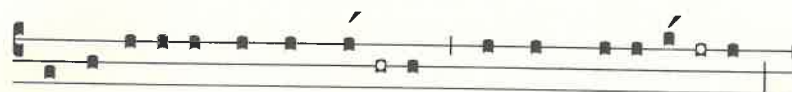
Atque sic fi-ní-tur. Atque sic fi-ní-tur.



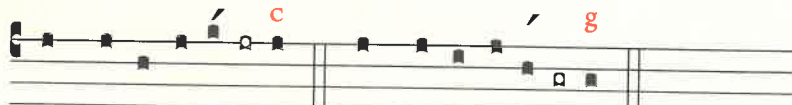
Atque sic fi-ní-tur. Atque sic fi-ní-tur.

Mediatio et omnes terminationes duplici accentu constant.

TONUS VIII



Sic incí-pi-tur, et sic flécti-tur, † et sic me-di-á-tur; *



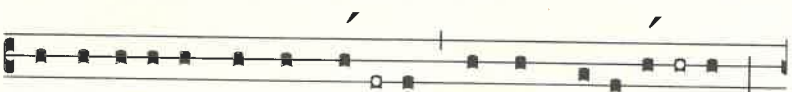
Atque sic fi-ní-tur. Atque sic fi-ní-tur.



Atque sic fi-ní-tur.

*Mediatio et terminationes unico accentu constant; terminationes
vero duabus syllabis præparationis.*

TONUS C



Sic incí-pi-tur, et sic flécti-tur, † et sic me-di-á-tur; *



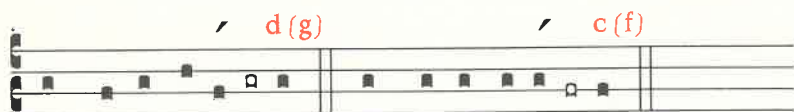
Atque sic fi-ní-tur. Atque sic fi-ní-tur.

*Mediatio et terminatio c2 unico accentu constant cum duabus
syllabis præparationis, terminatio c vero fit recta ac protracta voce.*

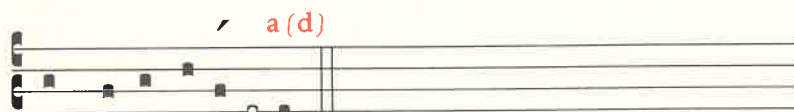
TONUS D



Sic incí-pi-tur, et sic flécti-tur, † et sic me-di-á-tur; *



Atque sic fi-ní-tur. Atque sic fi-ní-tur.



Atque sic fi-ní-tur.

Mediatio unico accentu constat cum duabus syllabis præparationis ; terminationes vero unico accentu cum tribus syllabis præparationis, excepta terminatione c (vel f), in qua transitus fit directe a tenore ad accentum, absque syllaba præparationis.

TONUS E



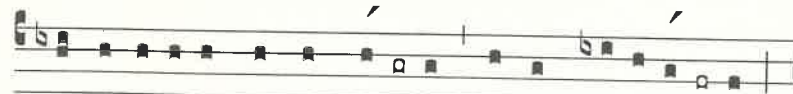
Sic incí-pi-tur, et sic flécti-tur, † et sic me-di-á-tur; *



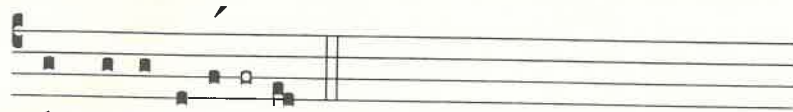
Atque sic fi-ní-tur.

Mediatio unico accentu constat, terminatio vero duplici.

TONUS «PEREGRINUS»



Sic incí-pi-tur, et sic flécti-tur, † et sic me-di-á-tur; *

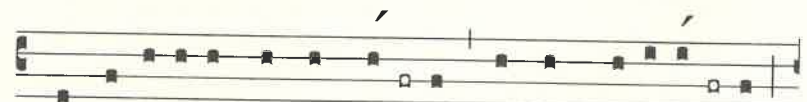


Atque sic fi-ní-tur.

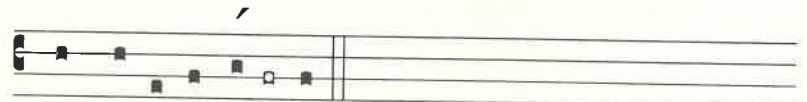
Mediatio unico accentu constat cum tribus syllabis præparationis ; terminatio vero unico accentu cum una syllaba præparationis.

PSALMODIA SINE ANTIPHONA

Psalmi sine antiphona cantandi sunt in tono C, cum terminatione c, p. 515. Ad Completorium vero, per octavas Paschæ et Nativitatis, ad libitum :



Sic incí-pi-tur, et sic flécti-tur, † et sic me-di-á-tur; *



Atque sic fi-ní-tur.