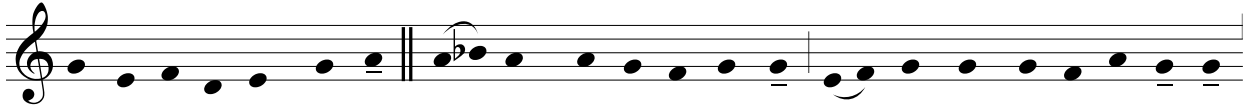
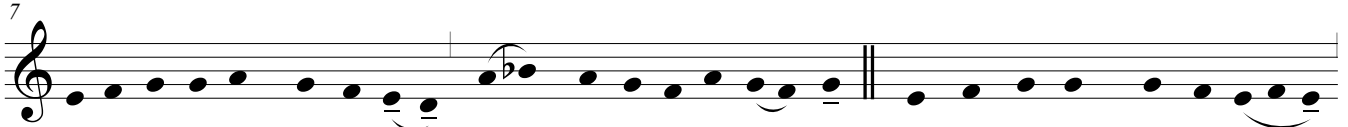


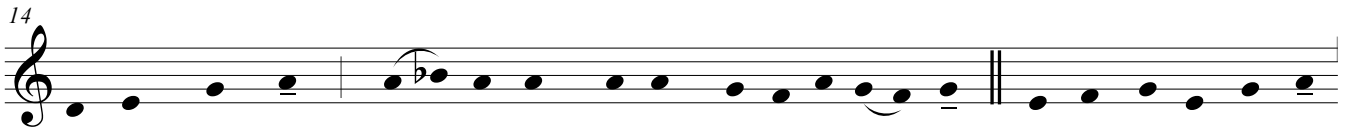
Credo I



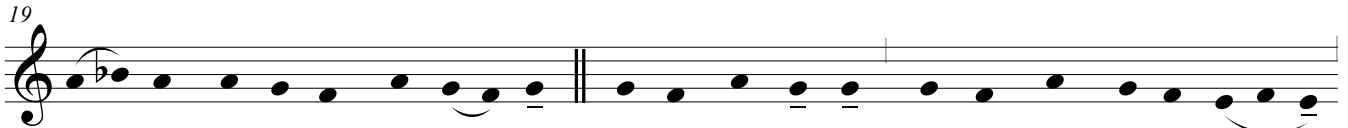
Cre-do in u-num De-um, Pa - trem om-ni-pot-en-tem fa - cto-rem cae-li et ter-rae,



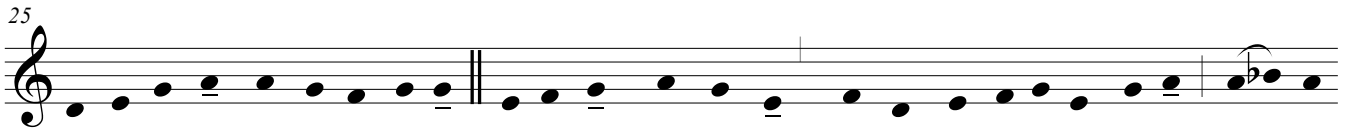
7 vi - si - bi - li - um om - ni - um, et in - vi - si - bi - li - um. Et in u - num Do - mi - num



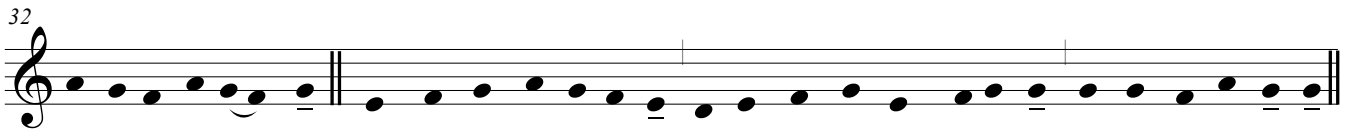
14 Je - sum Chri - stum, Fi - li - um De - i u - ni - ge - ni - tum. Et ex Pa - tre na - tum



19 an - te om - ni - a sae - cu - la. De - um de De - o, lu - men de lu - mi - ne,



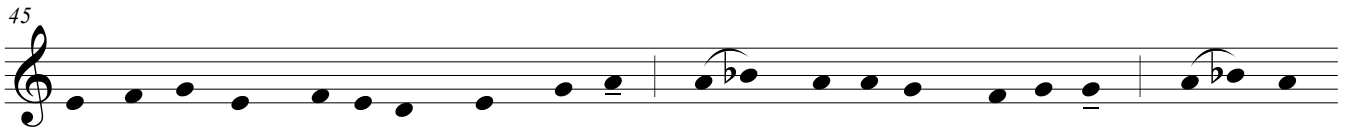
25 De - um ve - rum de De - o ve - ro. Ge - ni - tum, non fa - ctum, con - sub - stan - ti - a - lem Pa - tri: per - quem



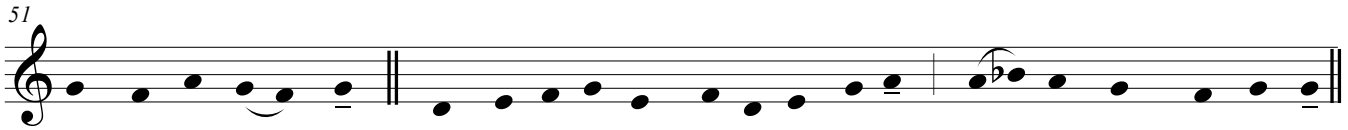
32 om - ni - a fa - cta sunt. Qui pro - pter nos ho - mi - nes, et pro - pter no - stram sa - lu - tem de - scen - dit de cae - lis.



39 Et in - car - na - tus est de Spi - ri - tu San - cto ex Ma - ri - a Vir - gi - ne: Et ho - mo fac - tus est.



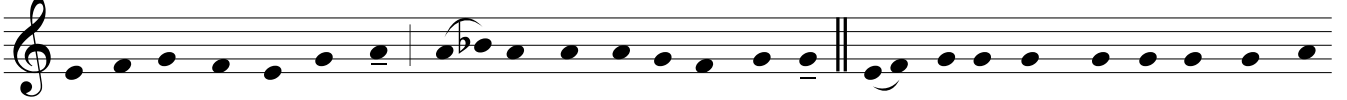
45 Cru - ci - fi - xus et i - am pro no - bis sub Pon - ti - o Pi - la - to pas - sus,



51 et se - pul - tus est. Et re - sur - re - xit ter - ti - a di - e, se - cun - dum Scri - ptu - ras.

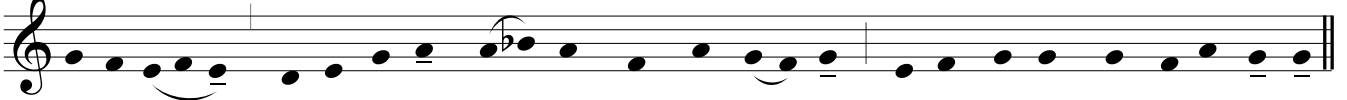
Credo I

56



Et a-scen-dit in cae-lum: se - det ad dex-te-ram Pa-tris. Et i - te-rum ven-tu-rus est cum

63




glo-ri - a, — ju - di - ca - re vi - vos et mor-tu - os: cu-jus re-gni non e-rit fi-nis.

69




Et in Spi - ri - tum San-ctum Do - mi - num, et — vi - vi - fi - can - tem qui ex Pa - tre

74




Fi - li - o - que pro - ce - dit. Qui cum Pa - tre et Fi - li - o si - mul ad - o - ra - tur,

80



et — con - glo - ri - fi - ca - tur: qui lo - cu - tus est per Pro - phe - tas.

83




Et u - nam san-ctam ca - tho - li - cam et — a - po - sto - li - cam Ec - cle - si - am.

89



Con - fi - te - or u - num bap - tis - ma in re - mis - si - o - nem pec - ca - to - rum. Et ex - spec - to re - sur - rec - ti - o - nem

97



mor - tu - o - rum. Et vi - tam ven - tu - ri sae - cu - li. A - - - - - men.