

ELEVENTH SUNDAY IN ORDINARY TIME

Entrance *Exaudi Domine*

RM 2011 ♪. GM Mode VII

O Lord, hear my voice, for I have called to you; be my help.

Do not abandon or forsake me, O God, my Sav - ior! *FINE*

♪. The Lord is my light and my sal - va - tion; whom shall I fear?

Glo - ry be... Ho - ly Spir - it. As it was... ev - er

shall be, world with - out end. A - men. O Lord, hear my voice...

Gradual *Protector noster*

GM Mode V

Be-hold, O God our pro-tec-tor, and look down up-on your ser - vants.

♪. O Lord God of hosts, hear the prayers of your ser - vants.

Gradual, Year B: **Bonum est confiteri**, p. ____.

Alleluia *Domine, in virtute tua*

GM Mode VI

Al - le - lu - ia. Al - le - lu - ia.

♪. The King shall rejoice in your strength, O Lord,

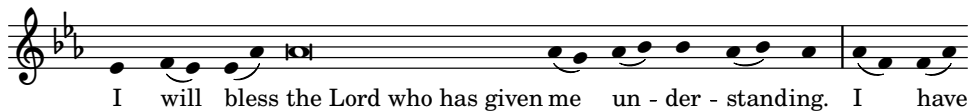
and in your salvation shall he be exceed - ing - ly joy - ful.



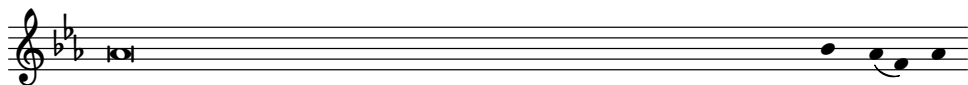
Al - le - lu - ia.

Offertory *Benedicam Dominum*

GM Mode VI



I will bless the Lord who has given me un - der - standing. I have



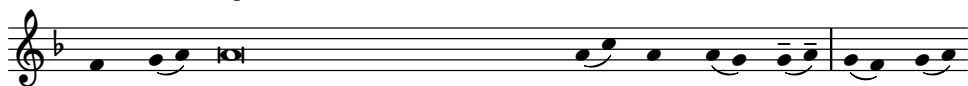
set the Lord always in my sight; since he is at my right hand, I shall not be



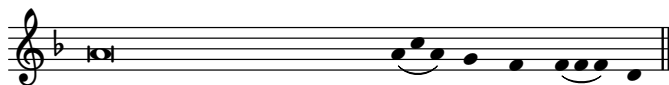
sha - ken.

Communion *Unam petii*

RM 2011 Mode I



There is one thing I ask of the Lord, only this do I seek: to live



in the house of the Lord all the days of my life.