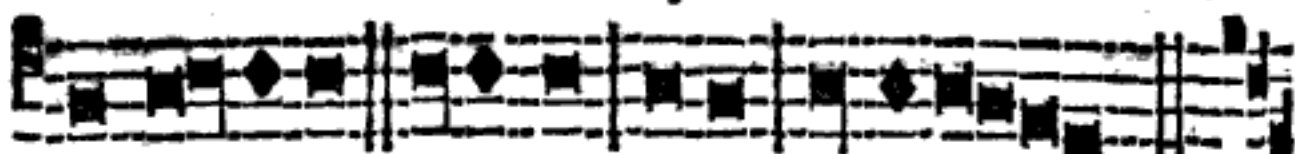


FAUXBOURDONS

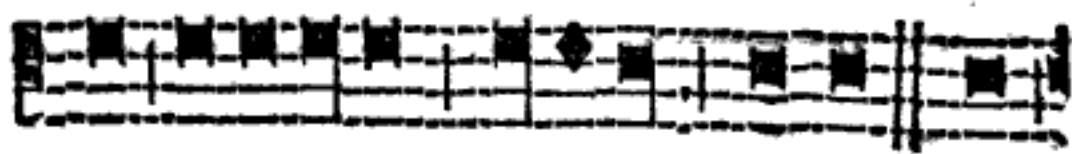
A L'USAGE DE L'EGLISE DE PARIS,
POUR LES FESTES SOLEMNELLES.

Intonation du premier Ton.



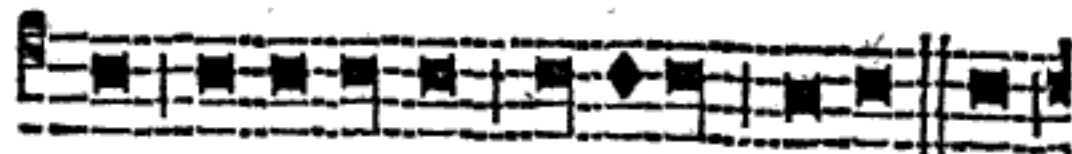
Magni- ficat a-ni-ma me-a Dominum:

*Enfans
de
Chœur.*



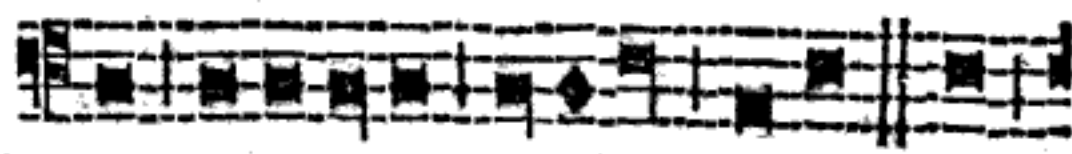
Et exul-tavit spi-ritus me-us , in

*Le
Peuple.*

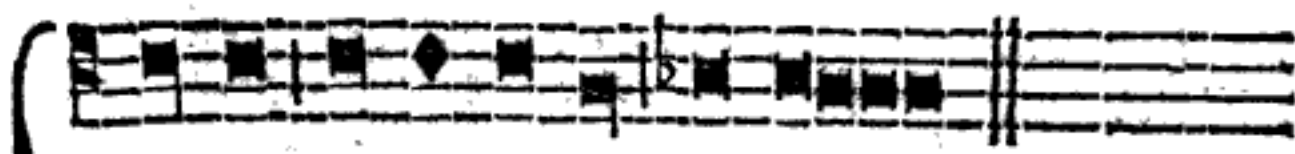


Et e-xulta-vit spi-ri-tus me-us , in

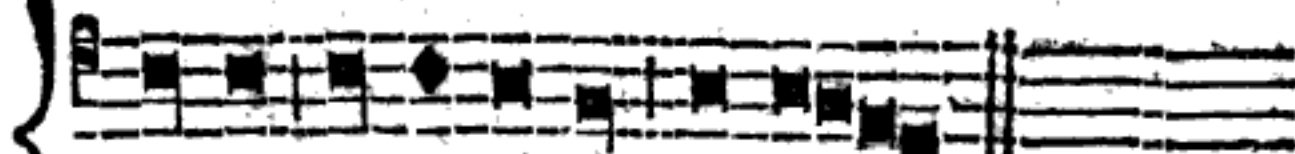
*Chœur
ou
Chantr.*



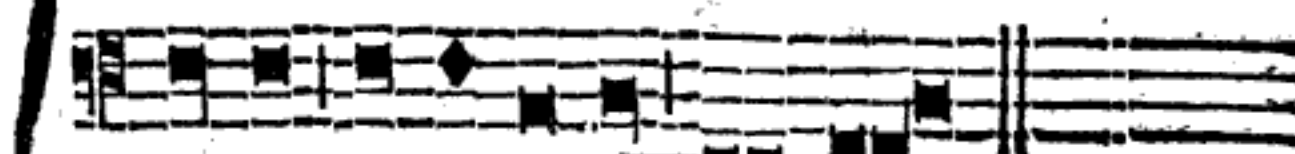
Et e-xultavit spi-ri-tus me-us , in



De-o sa-lu-ta-ri me-o.



De-o sa-lu-ta-ri me-o.



De-o sa-lu-ta-ri me-o.