

GREGORIAN PSALM TONES
AND GLORIA PATRI

For use with English
Entrance and Communion Antiphons



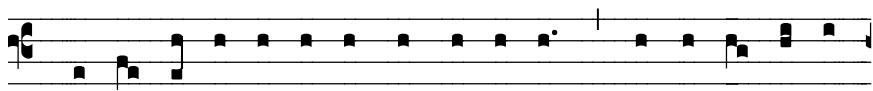
shall be, world without end. A- men. *or* o i ou e a e



or o i ou e a e

Mode 2

- 1 2 3 4 5 6 7 8 9 10 11 12



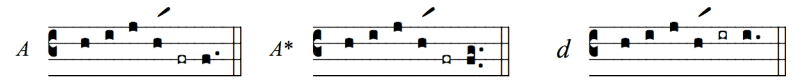
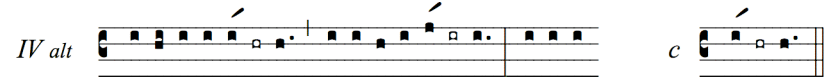
2. Glo- ry be to the Father, and to the Son, and to the Ho- ly



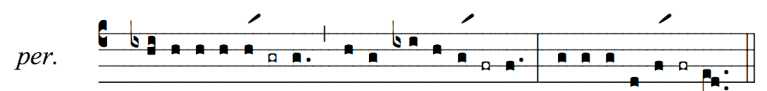
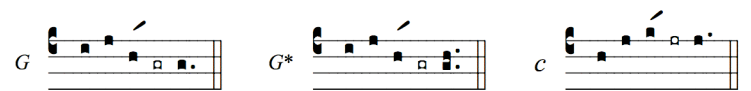
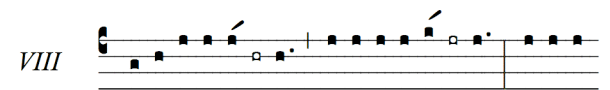
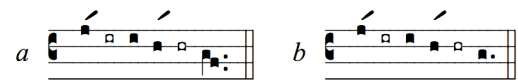
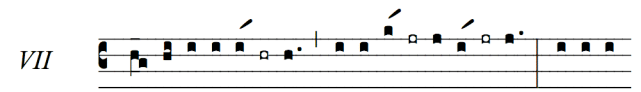
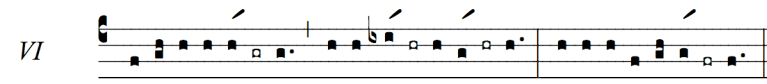
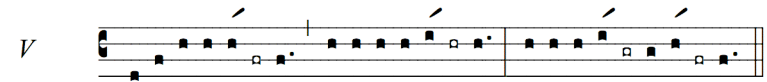
Spir- it. As it was in the be-ginning, is now and ev-er



shall be, world without end. A- men.



cf. LU p. 730



Office Psalm Tones

I

D *or* *D2*

f

g *g2* *g3*

a *a2* *a3*

II

III

b *a* *a2*

g *g2*

IV

g *E*

Mode 3 (modern dominant)

IV

3. Glo- ry be to the Father, and to the Son, and to the Ho- ly

Spir- it. As it was in the be- ginning, is now and ev- er

shall be, world without end. A- men.

Mode 3 (ancient dominant)

3. Glo- ry be to the Father, and to the Son, and to the Ho- ly

Spir- it. As it was in the be-ginning, is now and ev- er

shall be, world without end. A- men.

Mode 8

a

b

8. Glo-ry be to the Father and to the Son and to the Ho- ly

Spir- it. As it was in the be-ginning, is now and ev-er

shall be, world without end. A-men. *or o i ou e a e*

Mode 5

a

b

5. Glo- ry be to the Father, and to the Son, and to the Ho- ly

Spir- it. As it was in the be-ginning, is now and ev-er

shall be, world without end. A-men. *or* o i ou e a e

Mode 6

a

b

6. Glo- ry be to the Father, and to the Son, and to the Ho- ly

Spir- it. As it was in the be-ginning, is now and ev-er

shall be, world without end. A- men. *or* o i o e a e