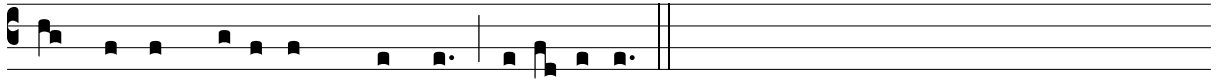


1 ANT. VII

**C**

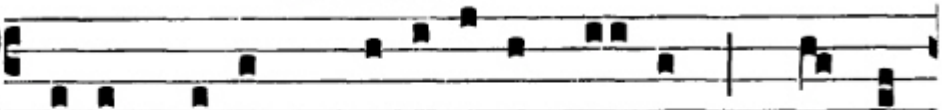


HRIST ascended into heav-en \* and prepared an everlasting place

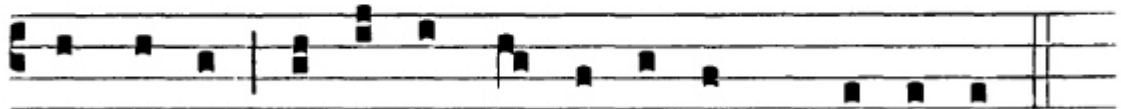


for his immacu-late Mo-ther, alle-lu-ia.

1. Antiph. VII. a



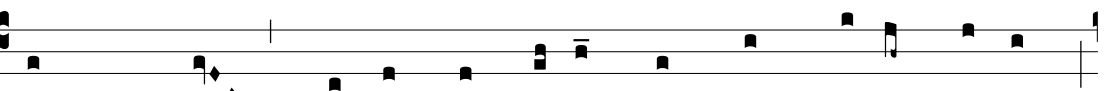
s-súmpta est Ma-rí-a in cœ-lum: \* gau-dent



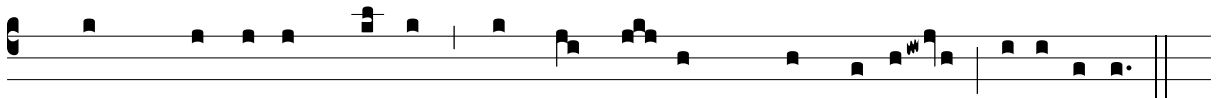
Ange - li, laudántes be - ne - dí - cunt Dó - mí - num.

2 ANT. VIII

**T**



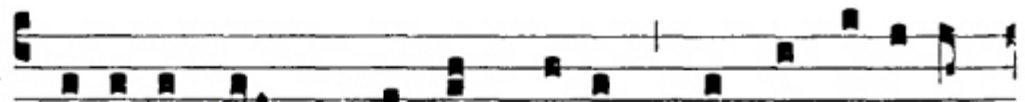
HROUGH Eve \* the gates of heaven were closed to all mankind;



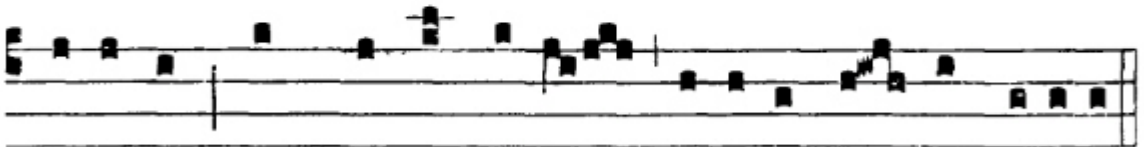
through the Virgin Mother they were o-pened wide again, alle-lu-ia.

2. Ant.  
VIII. G

**M**



a-rí-a Vir - go assúmpta est \* ad æthé-re-um



thá-lamum, in quo Rex re-gum stellá-to se - det só-li-o.

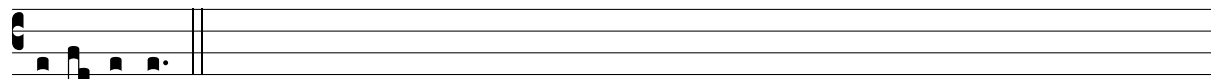
3 ANT. VII

**T**

he Vir-gin Mary \* has been exalt- ed a-bove all the heavens; come,



let all men glor-i-fy Christ the King, whose kingdom will endure forever,

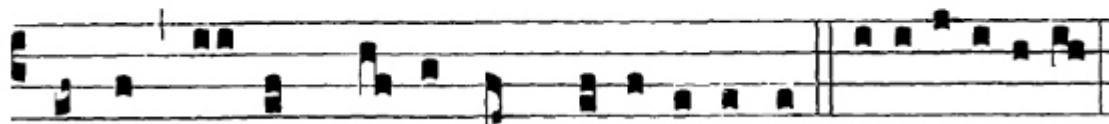


alle-lu-ia.

4. Ant.  
VII, c 2

**B**

e-ne-díc-ta \* fí - li - a tu a Dómi-no: qui-a



per te fruc-tum vi-tæ commu-ni-cá-vimus. E u o u a e.